

**Series TRB
TREB**

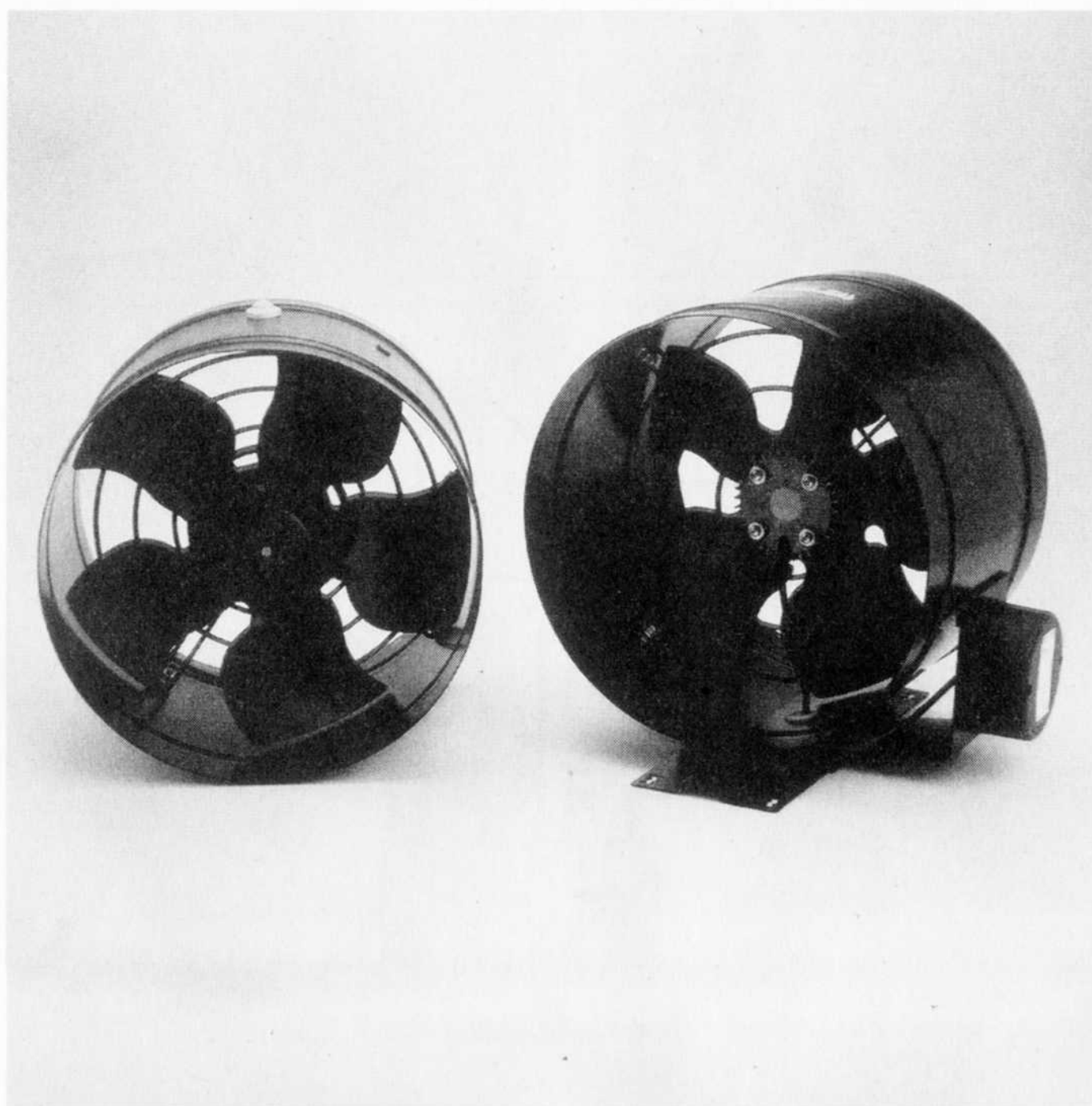
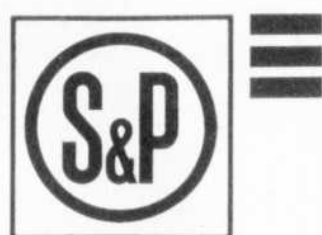


Fig. 1

TRB

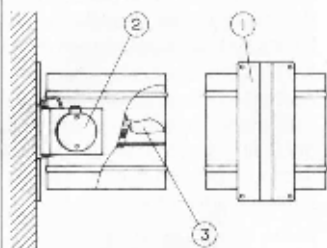


Fig. 2

TREB

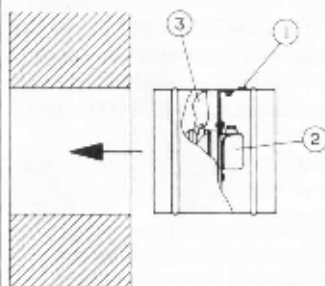
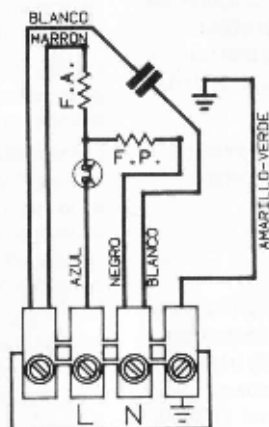


Fig. 3

TRB/TREB



Cased tubular fans

The TRB and TREB range of fans have been manufactured to strict production rules and quality assurance standards in accordance with ISO 9001 (or equivalents). All the components have been verified as well as all the units checked after assembly.

We recommend that the following points are checked on un-packing the unit:

- 1 - The correct size
- 2 - The correct model
- 3 - That the details on the rating plate are the required ones: voltage, frequency, speed ...

The installation should be carried out in accordance with the national rules and regulations on electrical installations.

INSTALLATION

The TRB and TREB fans have been designed to be installed on a wall (TRB) or connected to ducts or fixed in a wall (TREB). They can be operated with the motor shaft in any position.

(Fig. 1)

Mark the position of the holes on the wall to fix the support by using the support bracket 1 as a template. Drill the holes and insert the fixing screws without tightening. Mount the unit, ensuring that the airflow direction as indicated by the arrows on the casing is correct. Then tighten the fixing screws.

Before any electrical connection is carried out to the terminal box 2, check that the impeller 3 turns on freely.

TREB Series: fixed mounting (Fig. 2)

After the hole on the wall has been drilled, pass the electrical wire through the cable-hole 1 in the casing.

Mount the unit ensuring that the airflow direction is according to the arrow on the casing (when extracting, the terminal box 2 should be accessible from the inside of the building). Finish the fixing of the unit taking care not to deform the casing. Before any electrical connection is carried out, check that the impeller 3 turns on freely.

Disconnect the unit from the mains supply before carrying out any maintenance operations.

Check that the voltage and frequency values of the mains supply are the same as those in the rating plate (maximum variation of voltage and frequency: $\pm 5\%$).

For the connection to the mains, Fig. 3 should be. Check that the earth connection has been carried out correctly.

SPEED REGULATION

The TRB/TREB can be controlled by an auto-transformer RMB type or by an electronic speed voltage controller REB type.

THERMAL PROTECTIONS

The motors of the TRB and TREB fans are IP44, class B and can work with a room temperature from -40°C to $+60^{\circ}\text{C}$. They are equipped with a thermal protection.

This thermal protection protects the motor winding against overheating due to incorrect operation.

IMPELLER

All impellers are dynamically balanced.

The air temperature should not be below -40°C or over 60°C .

Avoid excessive dust and dirt on the unit; this may prevent motor cooling and also unbalance the impeller.

(S&P reserves the right to modify this document with previous warning)