



Serie
Model 476FL SPECIAL VERSION - FUSES

Drawing code HF620C1034S Controller pC01

Power supply 400V 3~ 50Hz + N
Auxiliary supply 24VAC 230VAC

Created by FF1 Revision by FF1
Date 14-05-2009 On 19-06-2009 Index A

Max power (kW) 254kW
FLA (A) 411A
LRA (A) 627A

Main protection 500A gG

REVISION			DATE
LAST	DATE	BY	14-05-2009
A	19-06-2009	FF1	



COVER

476FL SPECIAL VERSION - FUSES

HF620C1034S

TOTAL SHEET	37
CONTINUE	2
SHEET	1

A
B
C
D
E
F

PAGE	TITLE
1	COVER
2	PAGE SUMMARY
3	POWER SUPPLY INPUT
4	COMPRESSOR 1 AND 2
5	COMPRESSOR 3 AND 4
6	COMPRESSOR 5 AND 6
7	PUMPS
8	FANS
9	FANS
10	EC FANS WIRING
11	EC FANS WIRING
12	HEATERS
13	AUXILIARY TRASFORMERS
14	AUXILIARY WIRING
15	AUXILIARY WIRING
16	AUXILIARY WIRING
17	AUXILIARY WIRING
18	AUXILIARY WIRING
19	AUXILIARY WIRING

PAGE	TITLE
20	AUXILIARY WIRING
21	AUXILIARY WIRING
22	AUXILIARY WIRING
23	EXPANSION VALVE
24	AUXILIARY WIRING
25	PROBES
26	LAN CONNECTION
27	BOARDS SUMMARY
28	JUNCTION BOX KIT
29	MATERIALS LIST
30	MATERIALS LIST
31	MATERIALS LIST
32	MATERIALS LIST
33	MATYERIALS LIST
34	LAYOUT
35	CABLES
36	INTERNAL NOTE
37	REVISION HISTORY

A
B
C
D
E
F

REVISION			DATE	14-05-2009	PAGE SUMMARY				TOTAL SHEET	37	
LAST	DATE	BY	DRAW.	FF1					CONTINUE	3	
A	19-06-2009	FF1	CHECK	FF1	476FL SPECIAL VERSION - FUSES				HF620C1034S	SHEET	2
			APPR.	MM							

1 2 3 4 5 6 7 8

A

B

C

D

E

F

A

B

C

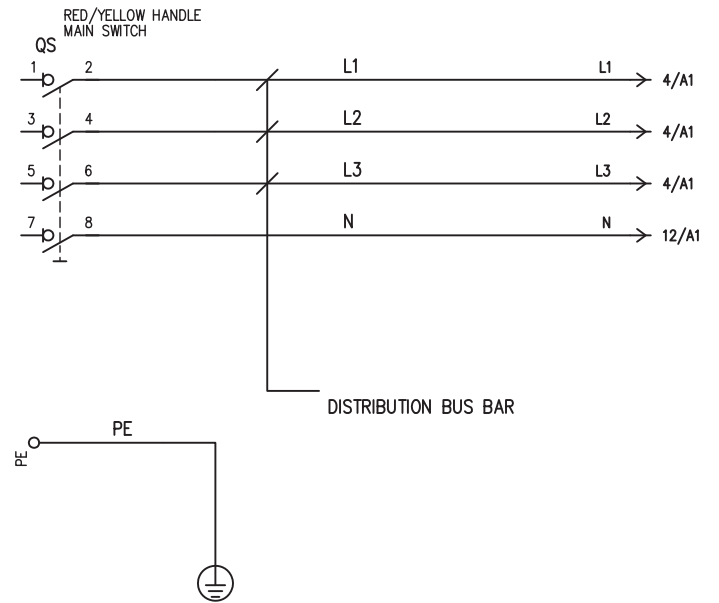
D

E

F

POWER SUPPLY
400V 3~ 50Hz + N

500A gG



REVISION			DATE	14-05-2009	POWER SUPPLY INPUT			TOTAL SHEET	37
LAST	DATE	BY	DRAW.	FF1				CONTINUE	4
A	19-06-2009	FF1	CHECK	FF1	476FL SPECIAL VERSION - FUSES			SHEET	3
			APPR.	MM	HF620C1034S				

1

2

3

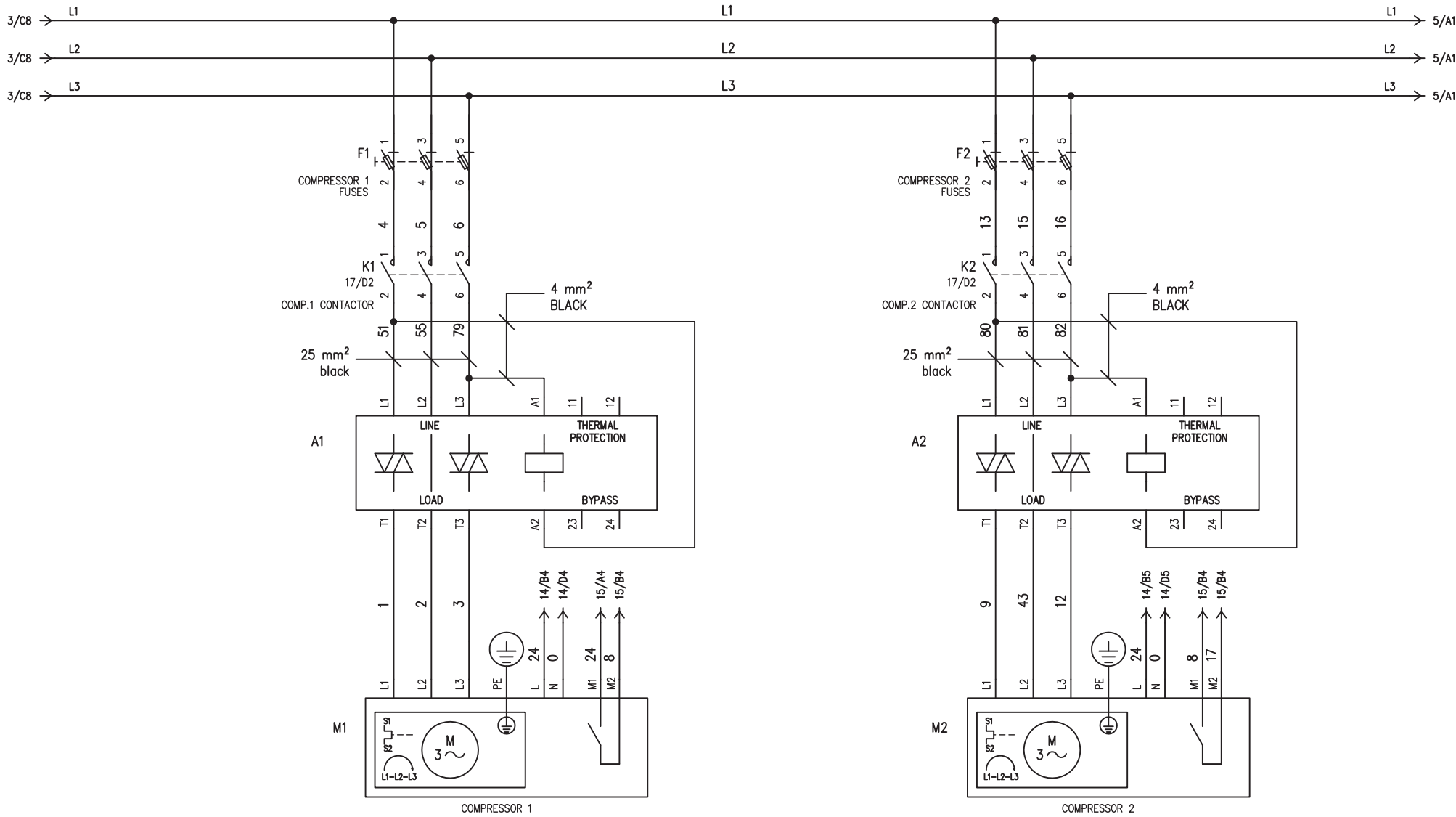
4

5

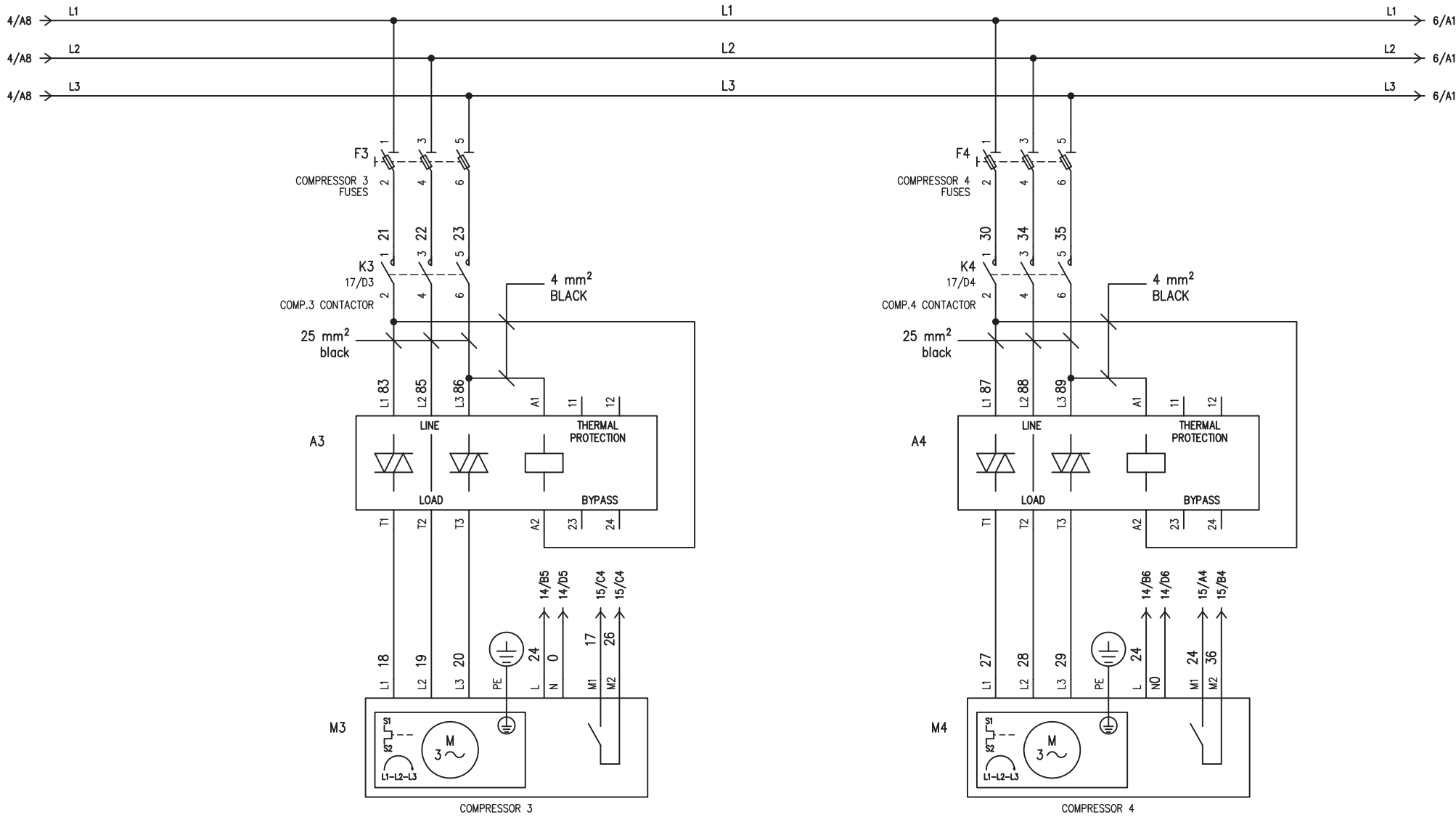
6


7

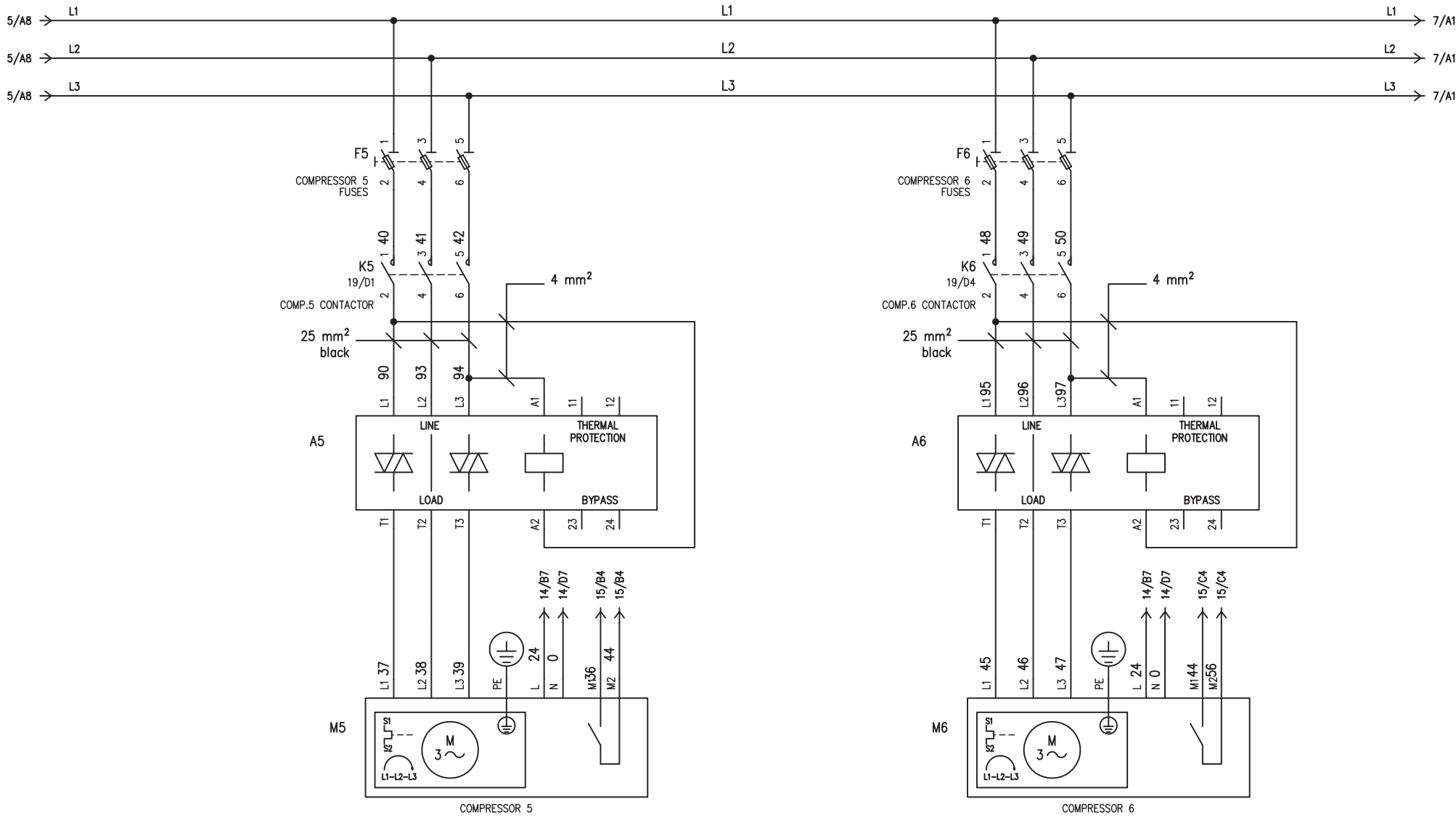
8



REVISION			DATE	14-05-2009	COMPRESSOR 1 AND 2			TOTAL SHEET	37		
LAST	DATE	BY	DRAW.	FF1	LENNOX			CONTINUE	5		
A	19-06-2009	FF1	CHECK	FF1				476FL SPECIAL VERSION - FUSES	HF620C1034S	SHEET	4
			APPR.	MM							



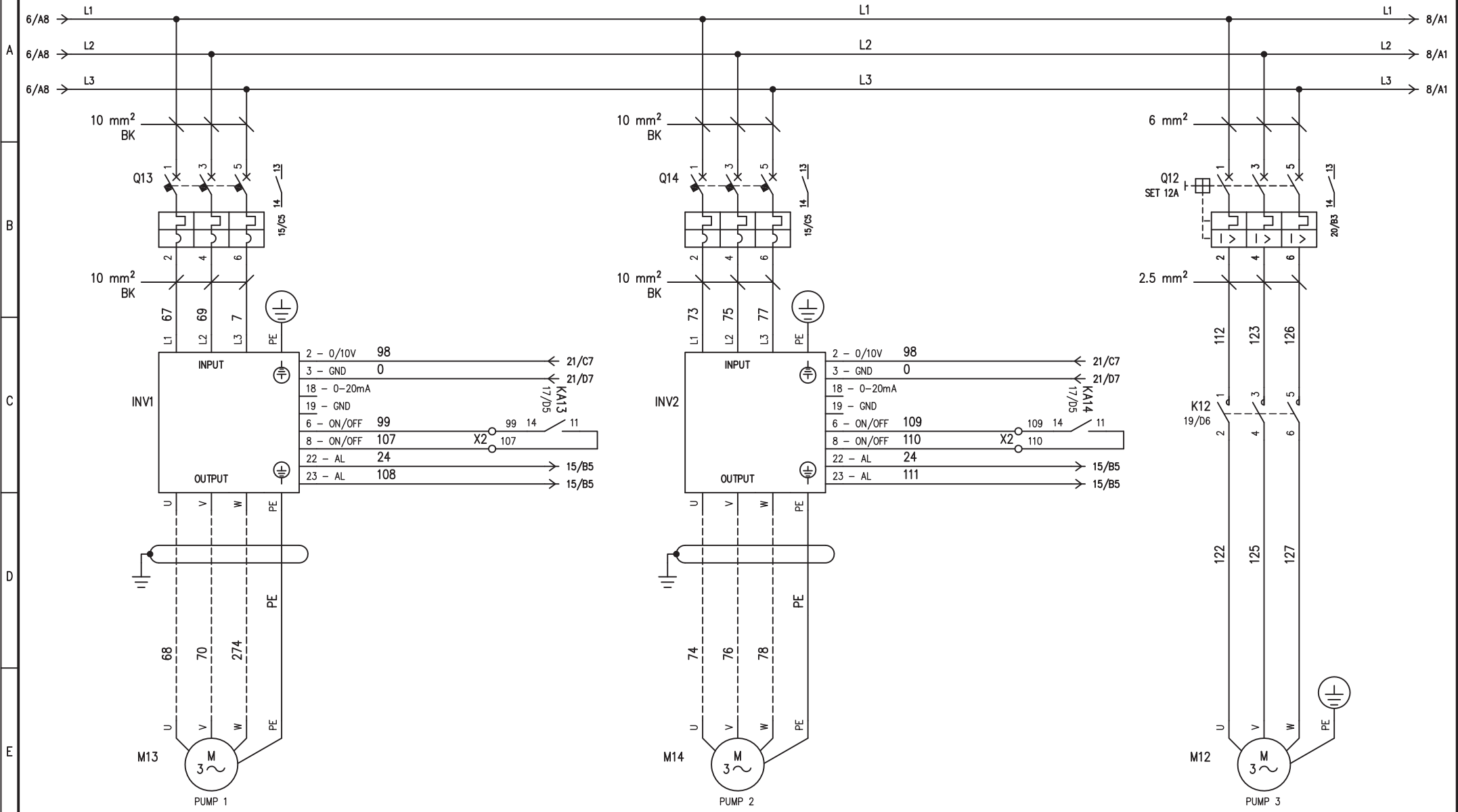
REVISION			DATE	14-05-2009				TOTAL SHEET 37	
LAST	DATE	BY	DRAW.	FF1				CONTINUE . 6	
A	19-06-2009	FF1	CHECK	FF1	COMPRESSOR 3 AND 4 476FL SPECIAL VERSION - FUSES			SHEET 5	
			APPR.	MM				HF620C1034S	



REVISION		DATE	14-05-2009	COMPRESSOR 5 AND 6			TOTAL SHEET	37
LAST	DATE	BY	DRAW.	FF1	CONTINUE			7
A	19-06-2009	FF1	CHECK	FF1	SHEET			6
			APPR.	MM	476FL SPECIAL VERSION - FUSES		HF620C1034S	

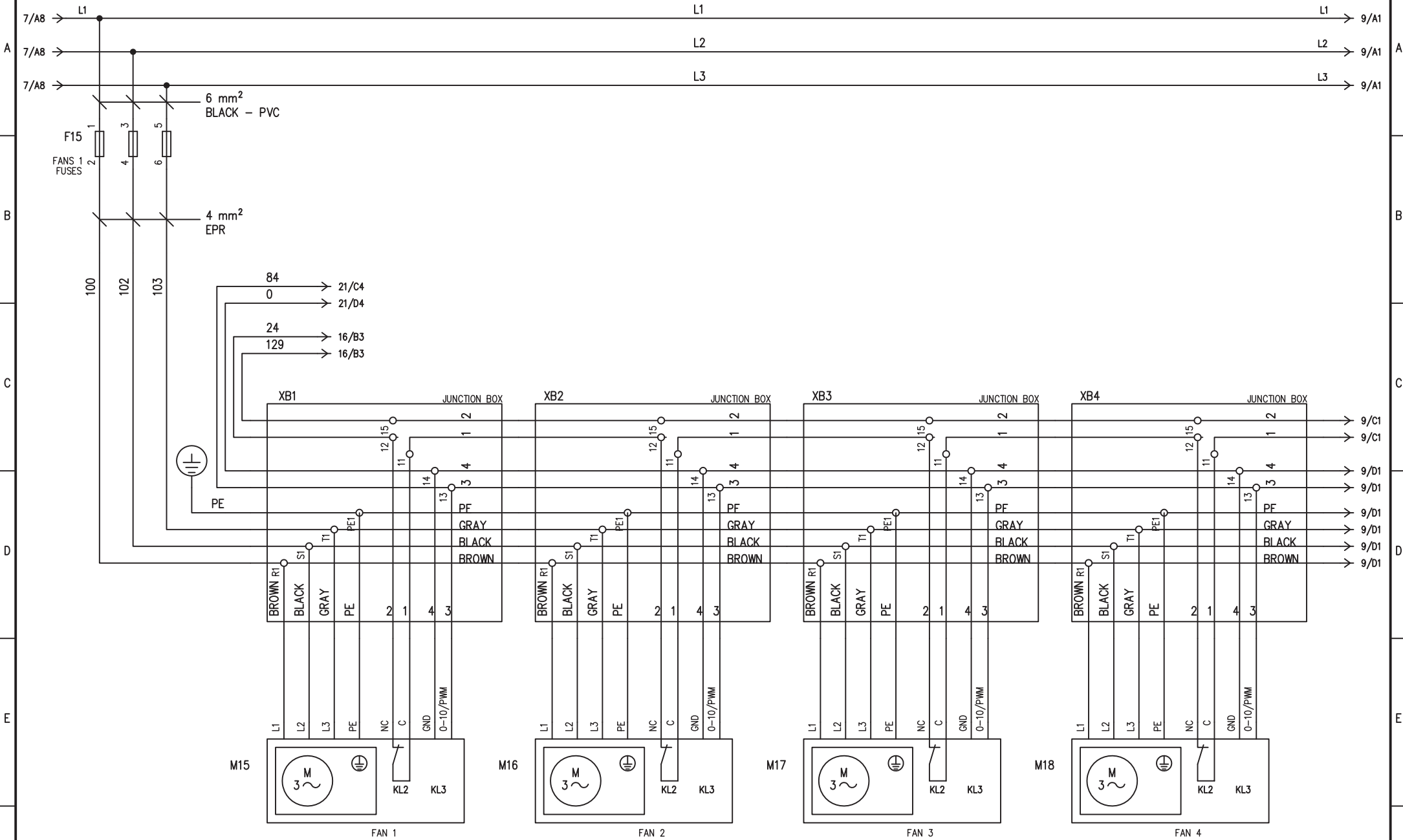


1 2 3 4 5 6 7 8



REVISION			DATE	14-05-2009	PUMPS			TOTAL SHEET	37
LAST	DATE	BY	DRAW.	FF1	476FL SPECIAL VERSION - FUSES			CONTINUE	8
A	19-06-2009	FF1	CHECK	FF1	HF620C1034S			SHEET	7
			APPR.	MM					

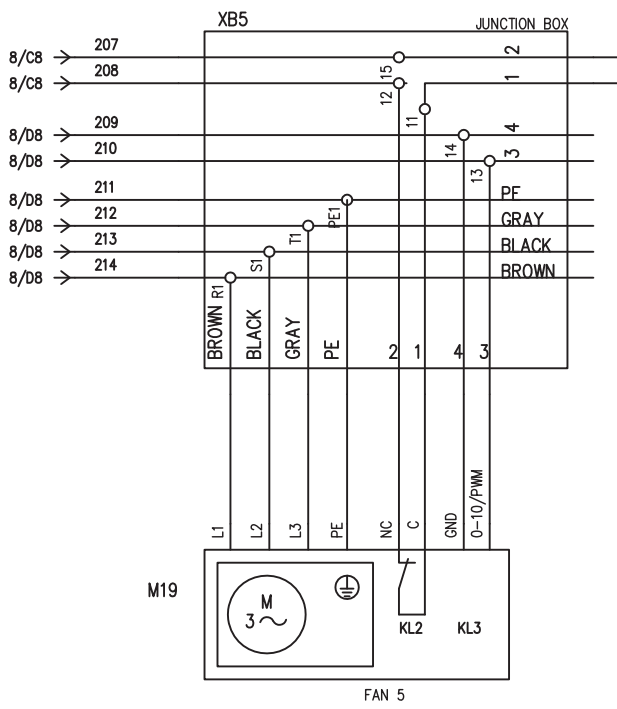
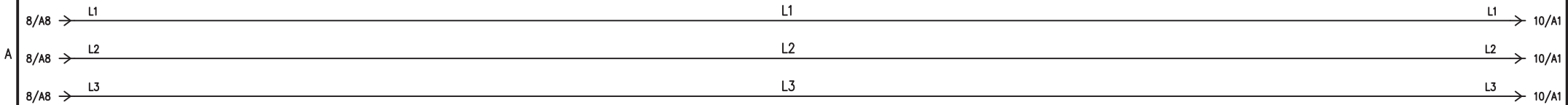




REVISION			DATE
LAST	DATE	BY	14-05-2009
A	19-06-2009	FF1	

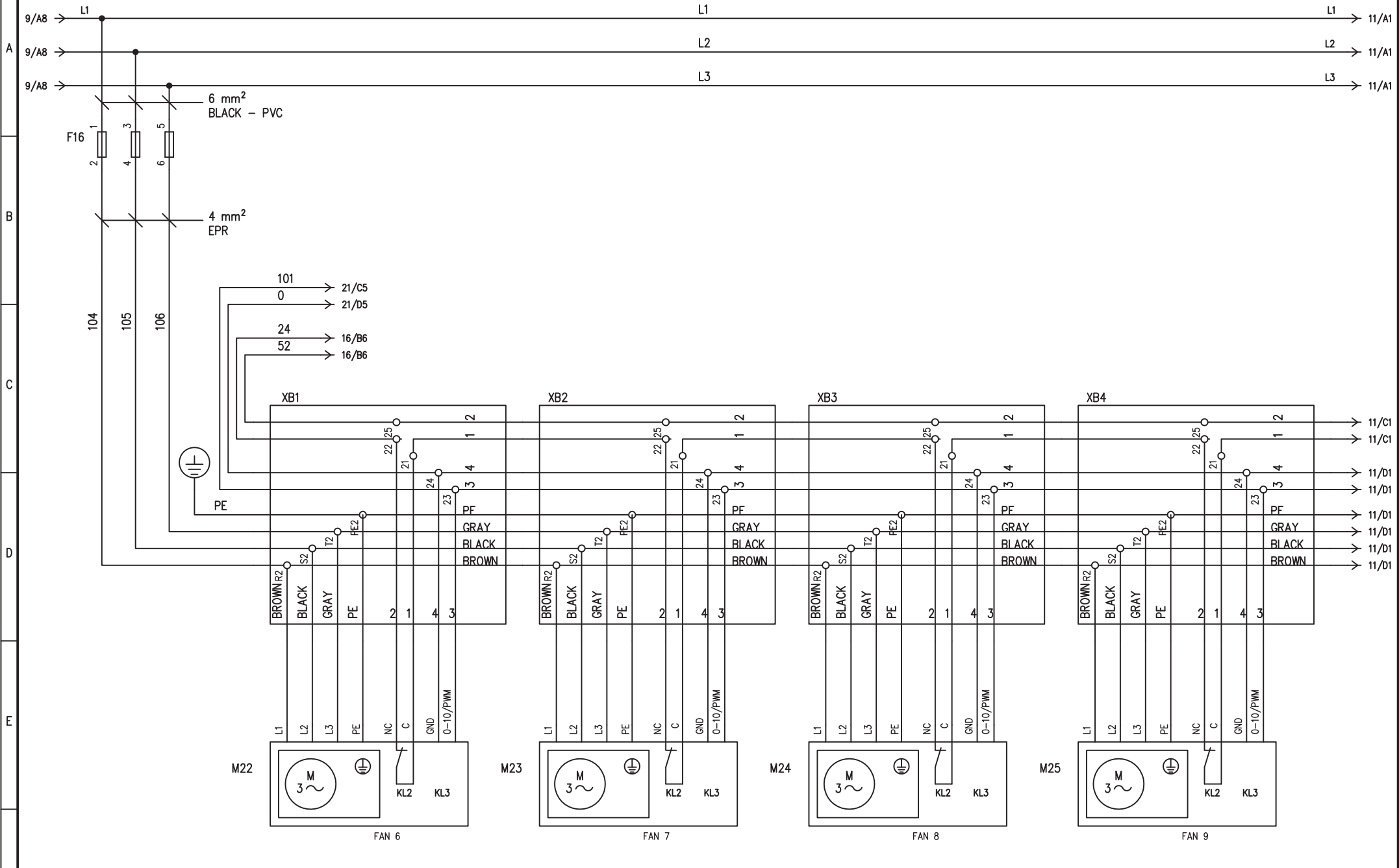


EC FANS WIRING		TOTAL SHEET 37
476FL SPECIAL VERSION - FUSES		CONTINUE . 9
HF620C1034S		SHEET 8



REVISION			DATE	LCE174				TOTAL SHEET	37
LAST	DATE	BY	DRAW.	476FL SPECIAL VERSION - FUSES				CONTINUE	10
A	19-06-2009	FF1	CHECK	HF620C1034S				SHEET	9
			APPR.						

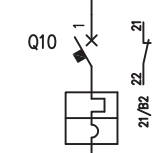
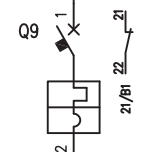
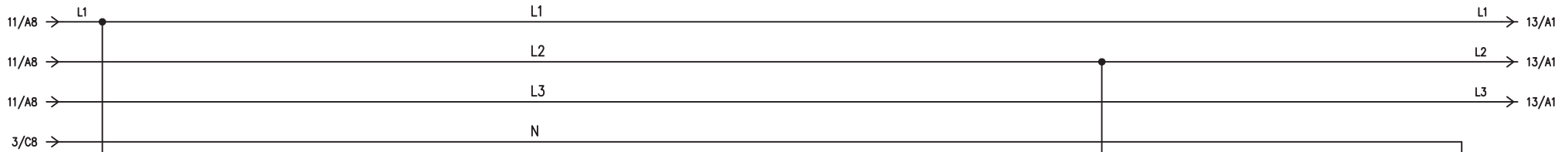




REVISION		DATE	14-05-2009
LAST	DATE	BY	DRAW. FF1
A	19-06-2009	FF1	CHECK FF1
		APPR.	MM



EC FANS WIRING		TOTAL SHEET	37
476FL SPECIAL VERSION - FUSES		CONTINUE	11
HF620C1034S		SHEET	10

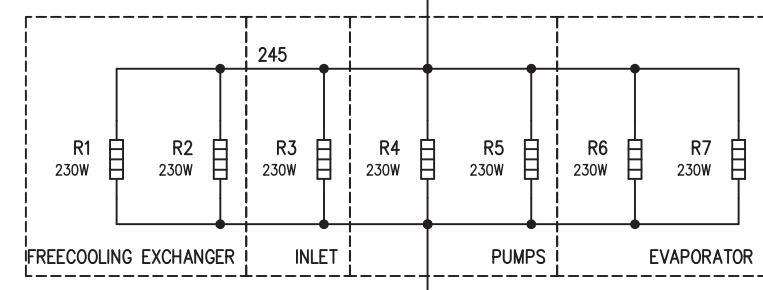
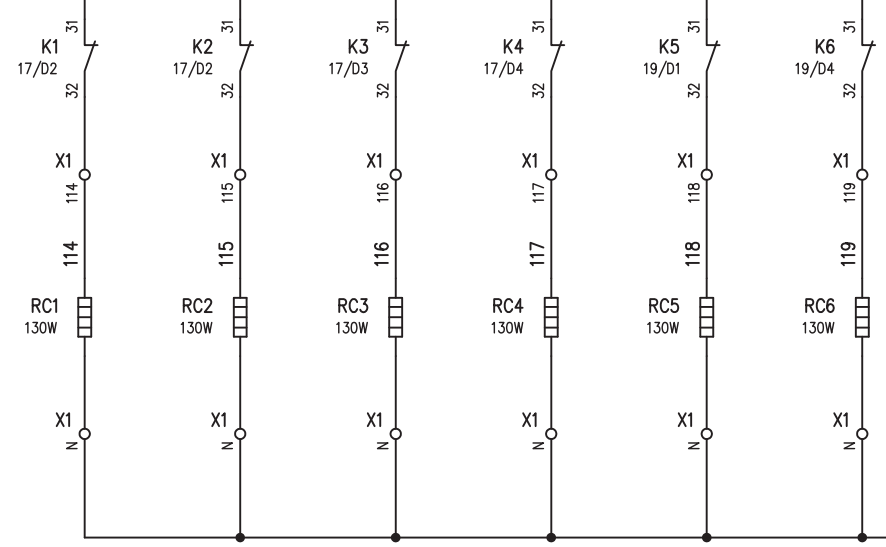


1.5 mm²
black

1.5 mm²
BLACK

113

K10
17/D7



CIRCUIT 1

CIRCUIT 2

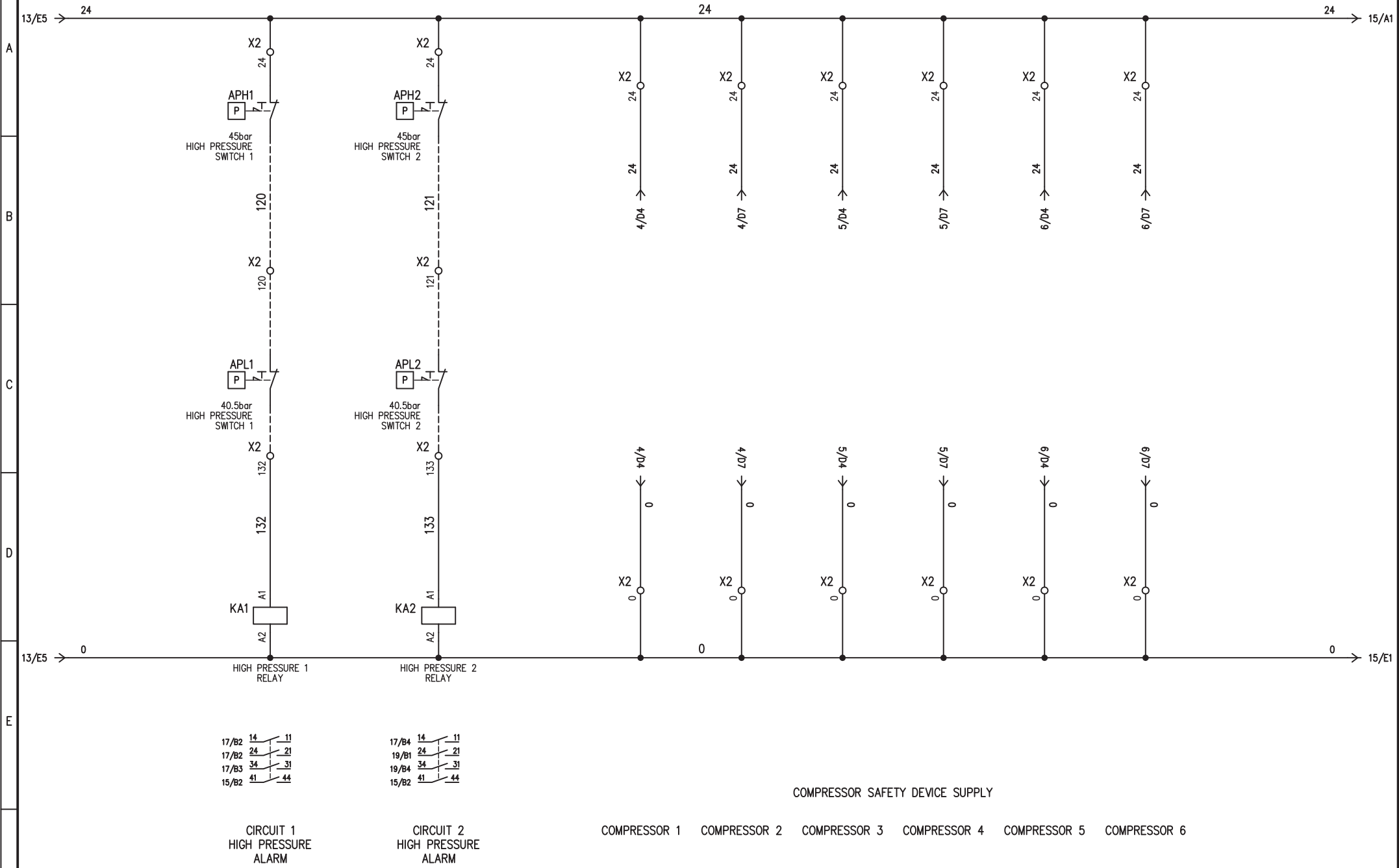
ANTIFREEZE HEATERS
(OPTIONAL)


COMPRESSOR 1 COMPRESSOR 2 COMPRESSOR 3 COMPRESSOR 4 COMPRESSOR 5 COMPRESSOR 6

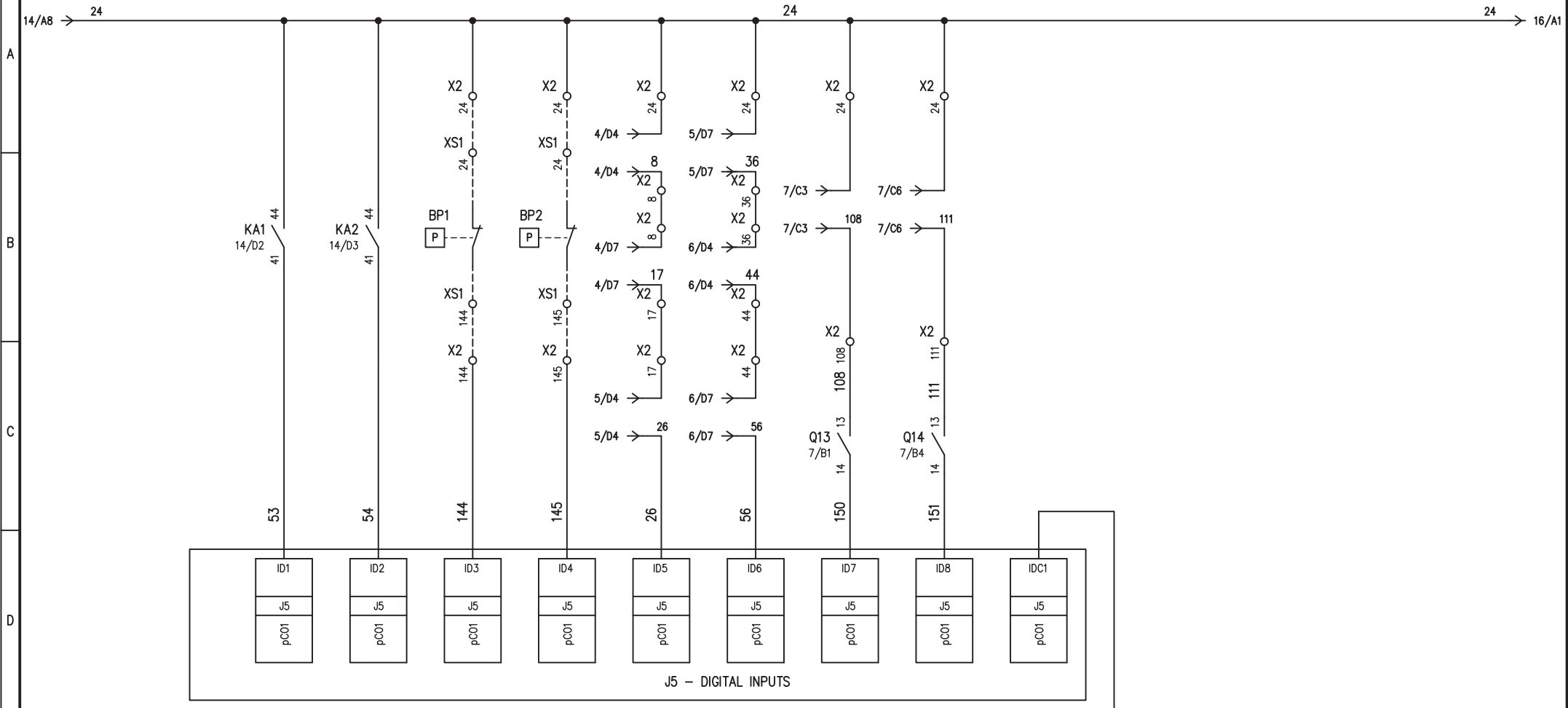
REVISION		DATE	14-05-2009
LAST	DATE	BY	DRAW. FF1
A	19-06-2009	FF1	CHECK FF1
			APPR. MM




HEATERS		TOTAL SHEET 37
476FL SPECIAL VERSION - FUSES		CONTINUE 13
HF620C1034S	SHEET	12

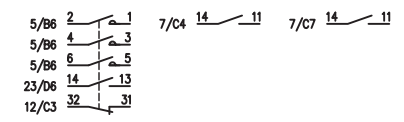
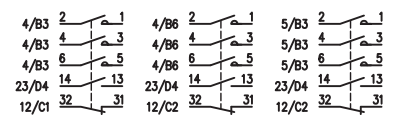
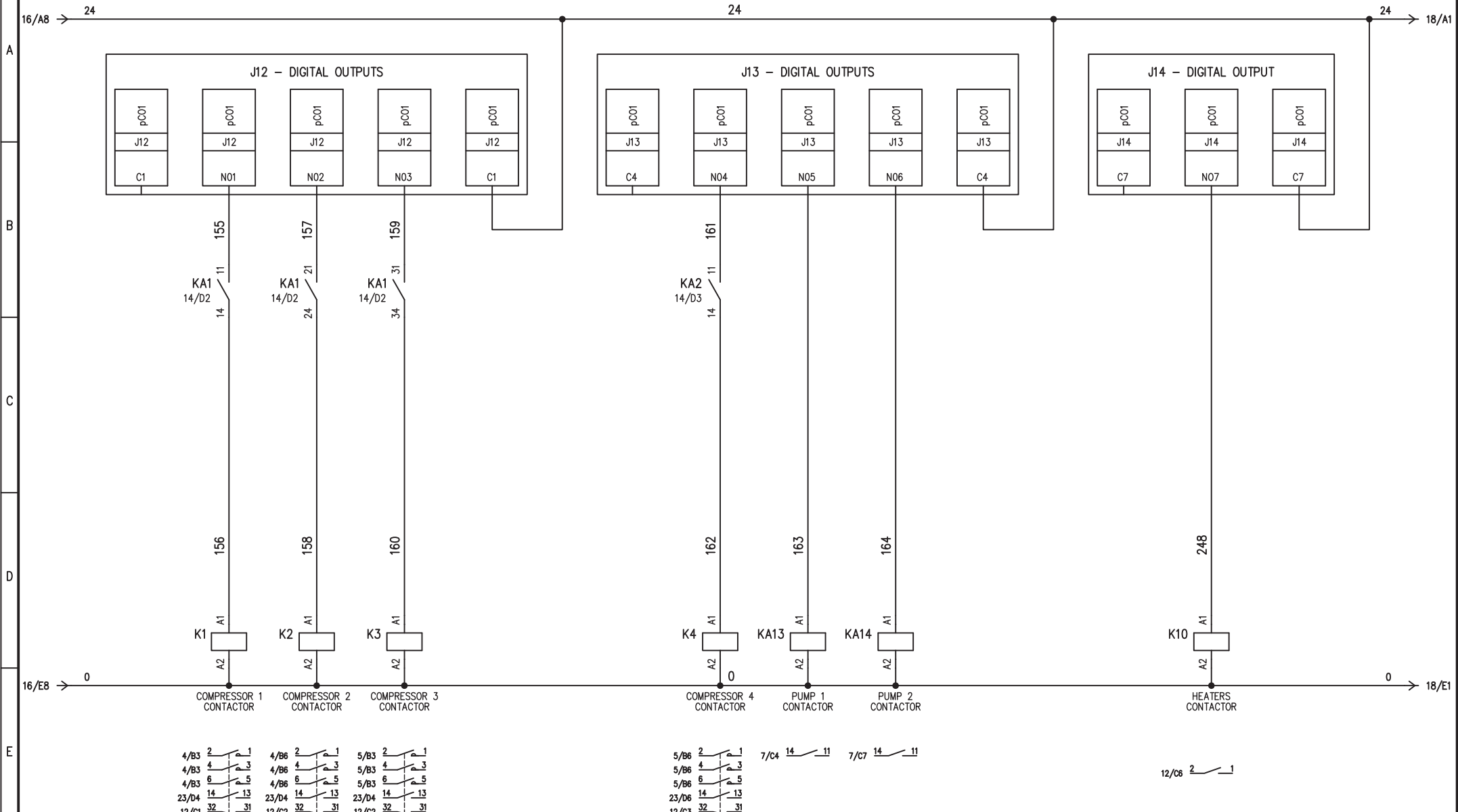


REVISION		DATE	14-05-2009	AUXILIARY WIRING			TOTAL SHEET	37		
LAST	DATE	BY	DRAW. FF1				CONTINUE	15		
A	19-06-2009	FF1	CHECK FF1				476FL SPECIAL VERSION - FUSES	HF620C1034S	SHEET	14
			APPR. MM							



HIGH PRESSURE 1 HIGH PRESSURE 2 LOW PRESSURE 1 ALARM LOW PRESSURE 2 ALARM CIRCUIT 1 THERMAL ALARM CIRCUIT 2 THERMAL ALARM PUMP 1 ALARM PUMP 2 ALARM

REVISION		DATE	14-05-2009					AUXILIARY WIRING		TOTAL SHEET	37
LAST	DATE	BY	DRAW.					FF1	476FL SPECIAL VERSION - FUSES		HF620C1034S
A	19-06-2009	FF1	CHECK	FF1				SHEET	15		
		APPR.	MM								



COMP.1 ON/OFF COMP.2 ON/OFF COMP.3 ON/OFF

COMP.4 ON/OFF PUMP 1 ON/OFF PUMP 2 ON/OFF

HEATER ON/OFF

REVISION		DATE	14-05-2009	AUXILIARY WIRING				TOTAL SHEET 37	
LAST	DATE	BY	DRAW.					FF1	CONTINUE . 18
A	19-06-2009	FF1	CHECK	FF1	476FL SPECIAL VERSION - FUSES		HF620C1034S	SHEET 17	
			APPR.	MM					





17/E8 → 0

KA6

A1

A2


GENERAL ALARM RELAY

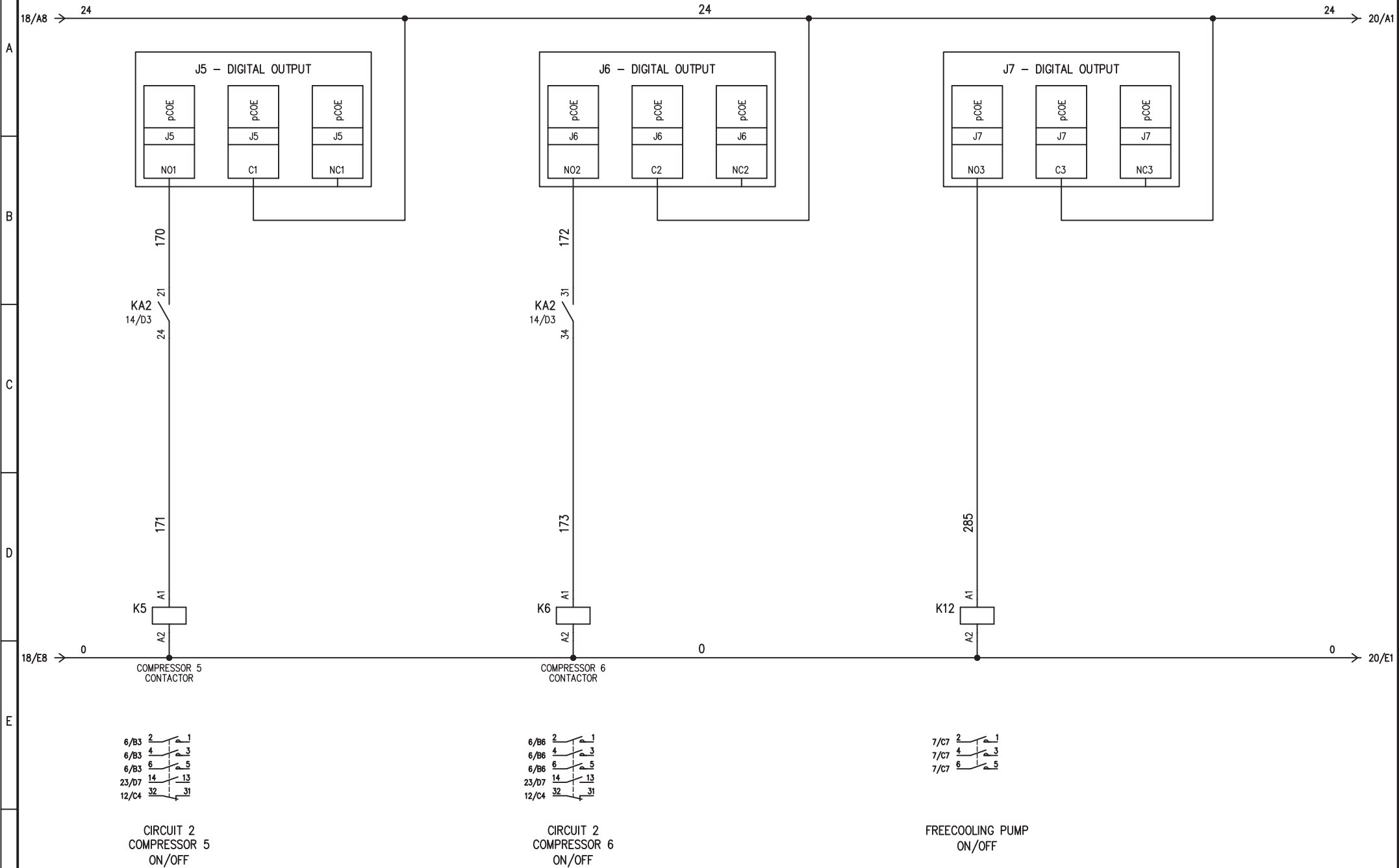
0 → 19/E1


22/B3 21 22 24

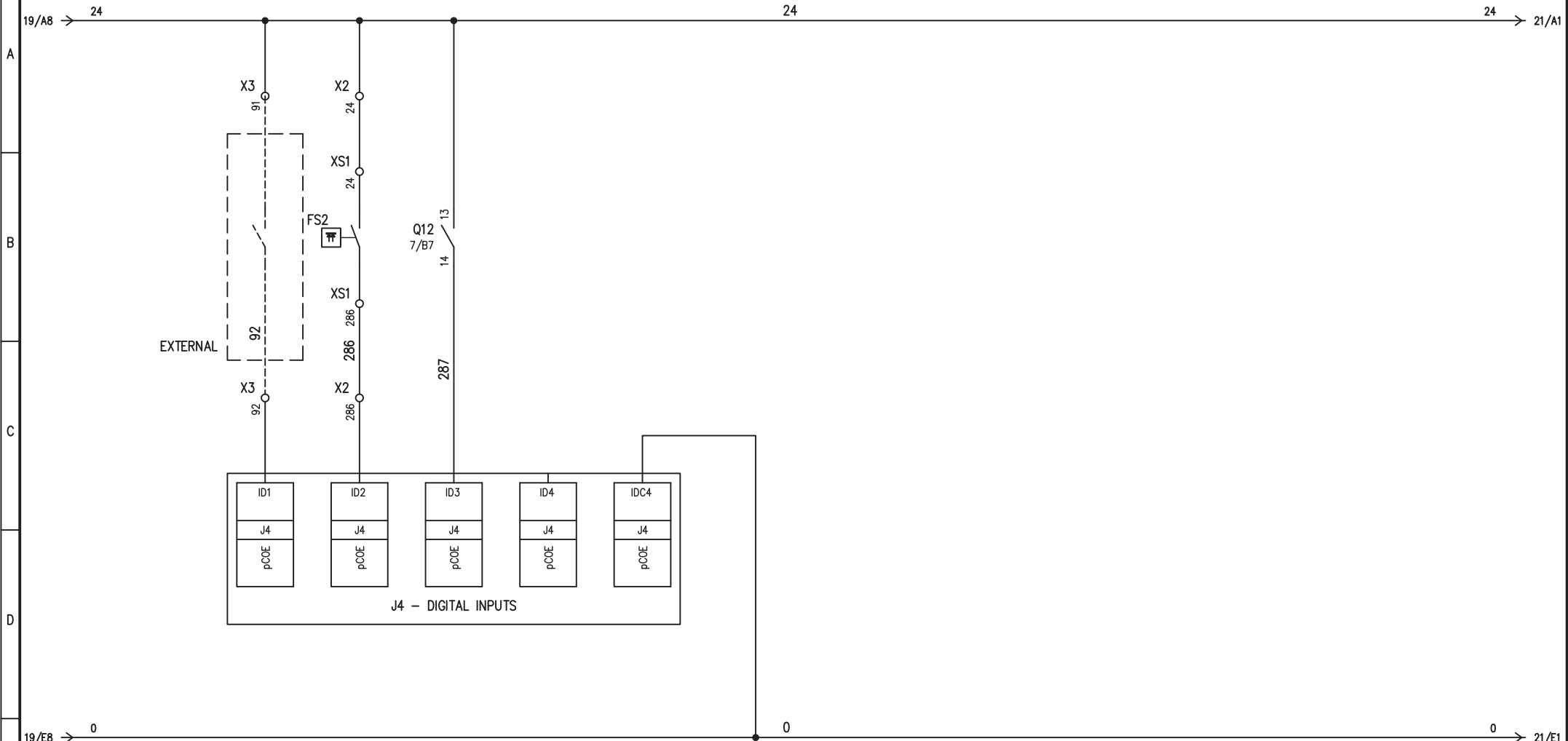
GENERAL ALARM

FREECOOLING VALVE


REVISION			DATE	14-05-2009	AUXILIARY WIRING			TOTAL SHEET	37		
LAST	DATE	BY	DRAW.	FF1				CONTINUE	19		
A	19-06-2009	FF1	CHECK	FF1				476FL SPECIAL VERSION - FUSES	HF620C1034S	SHEET	18
		APPR.	MM								

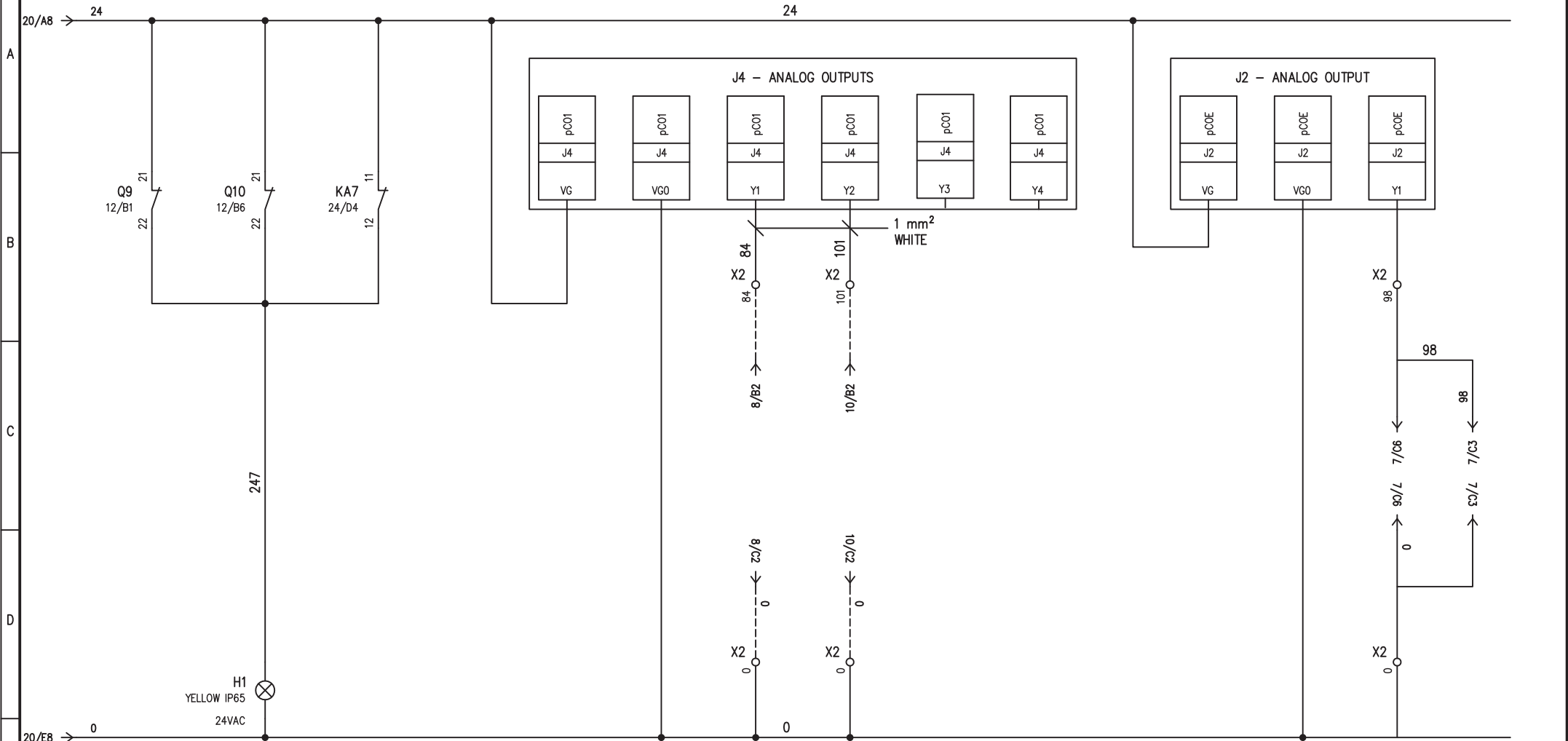


REVISION		DATE	14-05-2009	AUXILIARY WIRING		TOTAL SHEET	37		
LAST	DATE	BY	DRAW. FF1			CONTINUE	20		
A	19-06-2009	FF1	CHECK FF1			476FL SPECIAL VERSION - FUSES	HF620C1034S	SHEET	19
			APPR. MM						



COOLING CAPACITY REDUCTION FREECOOLING CIRCUIT FLOW SWITCH FREECOOLING PUMP ALARM

REVISION		DATE	14-05-2009	LCE174				TOTAL SHEET 37					
LAST	DATE	BY	DRAW. FF1					CONTINUE 21					
A	19-06-2009	FF1	CHECK FF1					476FL SPECIAL VERSION - FUSES				SHEET	20
			APPR. MM					HF620C1034S					
1	2	3	4	5	6	7	8						




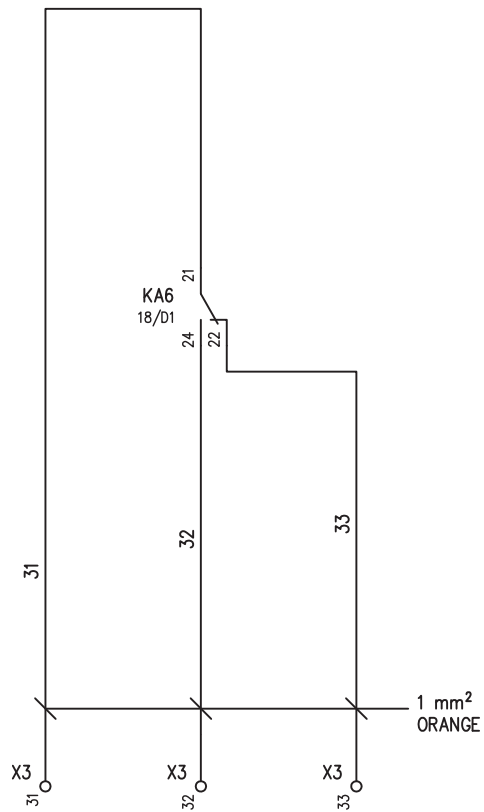
WARNING

FAN SPEED CONTROL SIGNAL

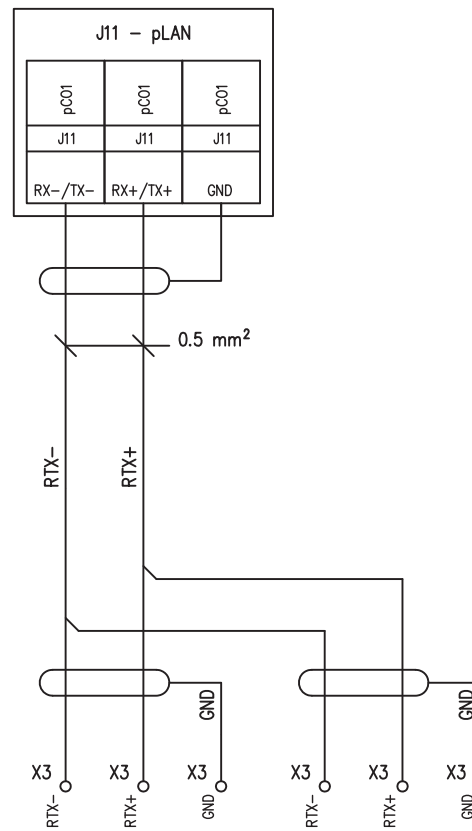
PUMPS INVERTERS
SPEED CONTROL
(0-10V)

CIRCUIT 1 CIRCUIT 2

REVISION			DATE	14-05-2009	AUXILIARY WIRING			TOTAL SHEET	37		
LAST	DATE	BY	DRAW.	FF1				CONTINUE	22		
A	19-06-2009	FF1	CHECK	FF1				476FL SPECIAL VERSION - FUSES	HF620C1034S	SHEET	21
		APPR.	MM								



SERIOUS ALARM
SIGNAL



pLAN CONNECTION

REVISION		DATE	14-05-2009
LAST	DATE	BY	DRAW. FF1
A	19-06-2009	FF1	CHECK FF1
		APPR.	MM



AUXILIARY WIRING

476FL SPECIAL VERSION - FUSES

HF620C1034S

TOTAL SHEET	37
CONTINUE	23
SHEET	22

1

2

3

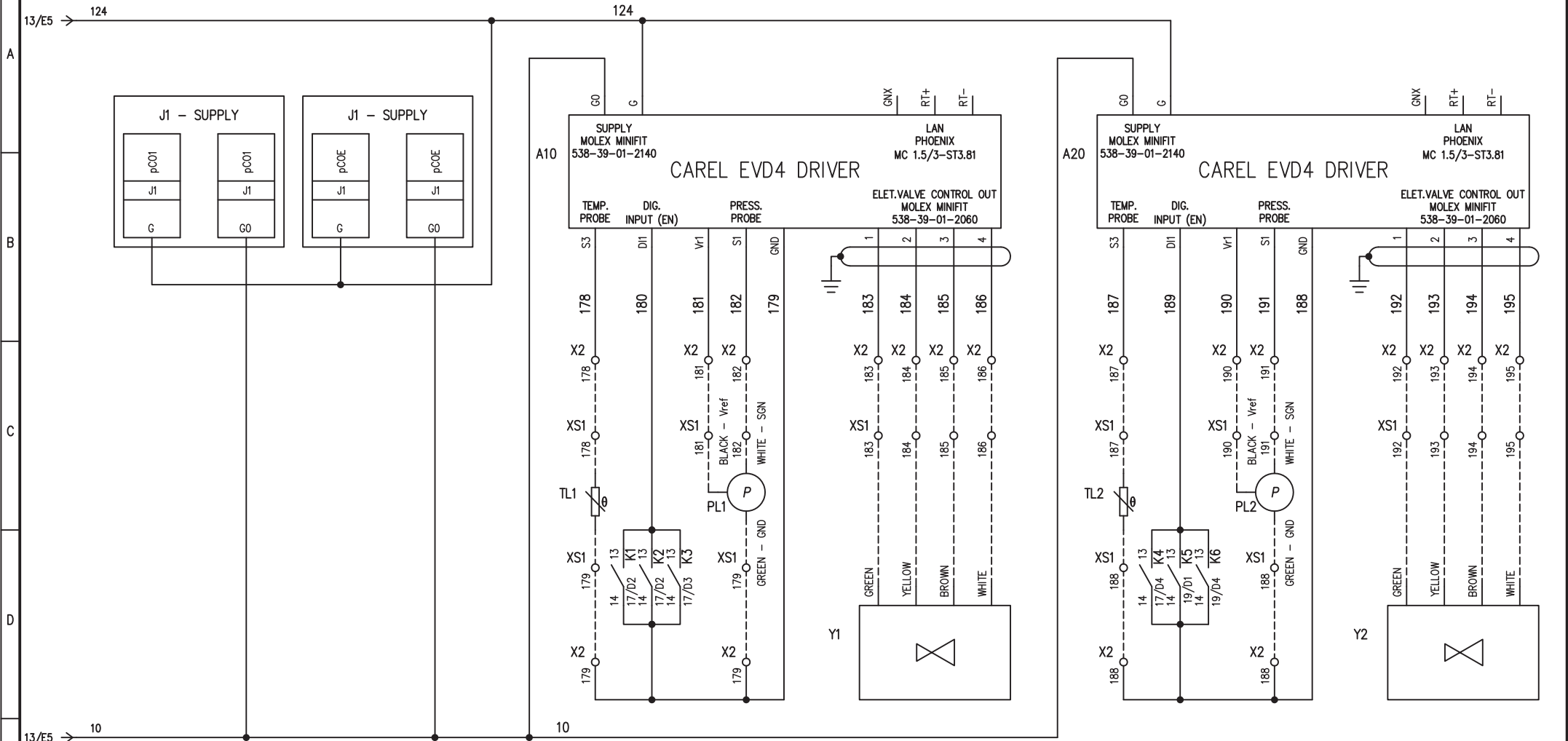
4

5

6

7

8



MAIN CONTROLLER
SUPPLY

EXPANSION BOARD 1
SUPPLY

CIRCUIT 1
ELECTRONIC EXPANSION VALVE

CIRCUIT 2
ELECTRONIC EXPANSION VALVE

REVISION		DATE	14-05-2009
LAST	DATE	BY	DRAW. FF1
A	19-06-2009	FF1	CHECK FF1
			APPR. MM



EXPANSION VALVE

476FL SPECIAL VERSION - FUSES

HF620C1034S

TOTAL SHEET	37
CONTINUE	24
SHEET	23

1

2

3

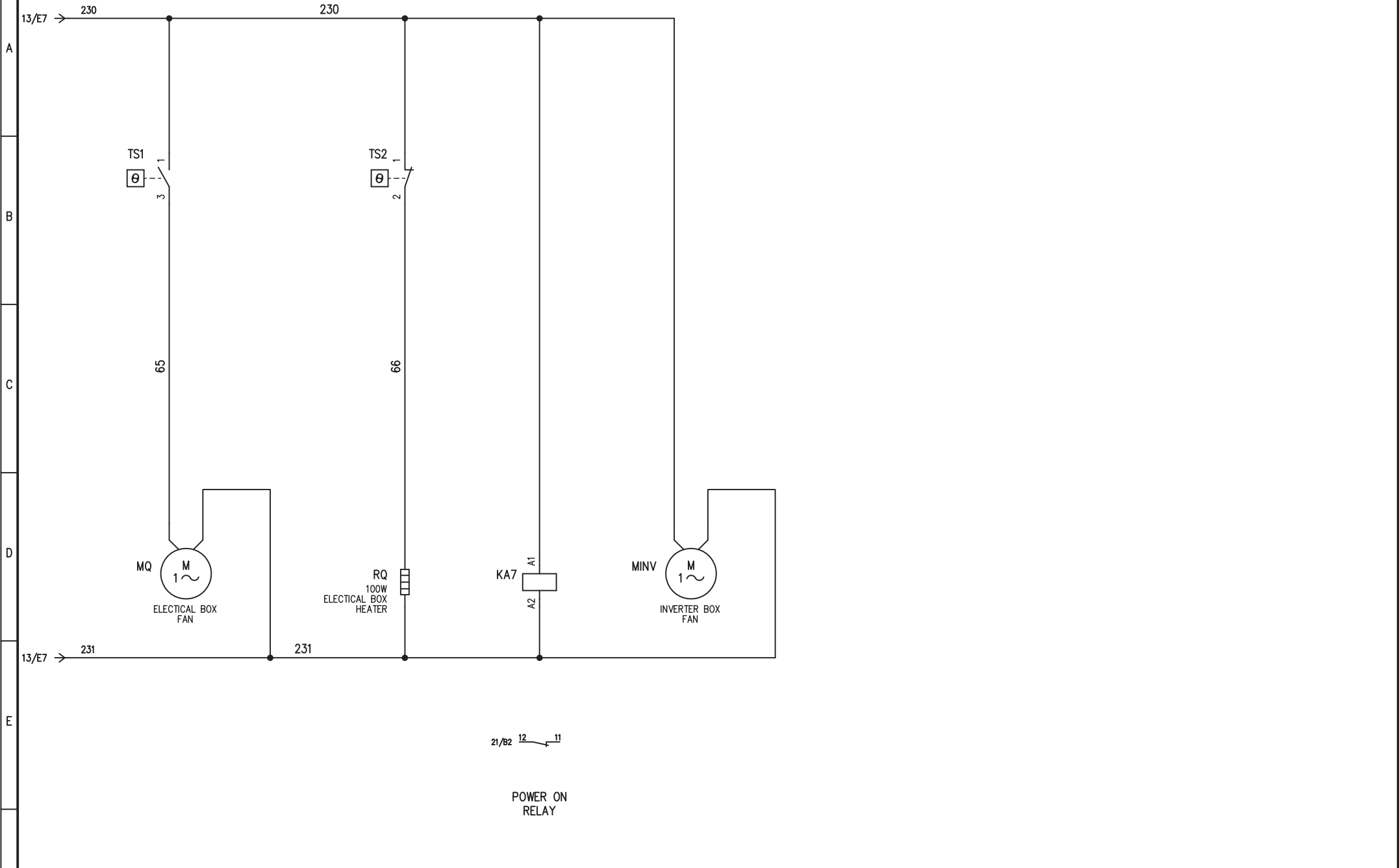
4

5

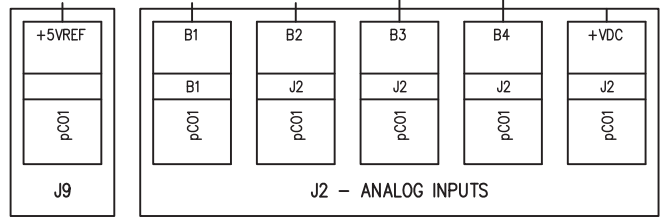
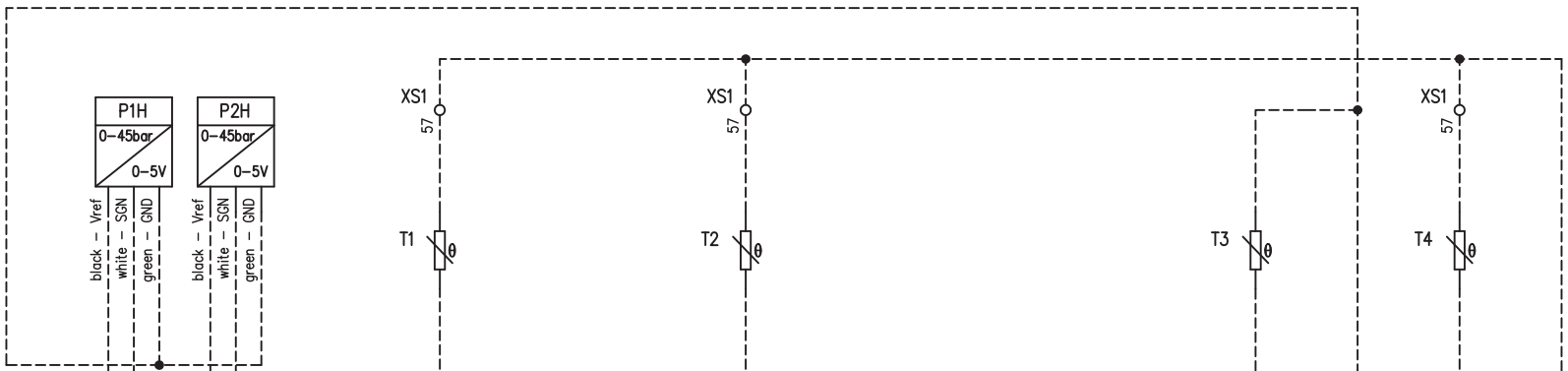
6

7

8



REVISION		DATE	14-05-2009	AUXILIARY WIRING				TOTAL SHEET	37			
LAST	DATE	BY	DRAW. FF1					CONTINUE	25			
A	19-06-2009	FF1	CHECK FF1					476FL SPECIAL VERSION - FUSES		HF620C1034S	SHEET	24
			APPR. MM									

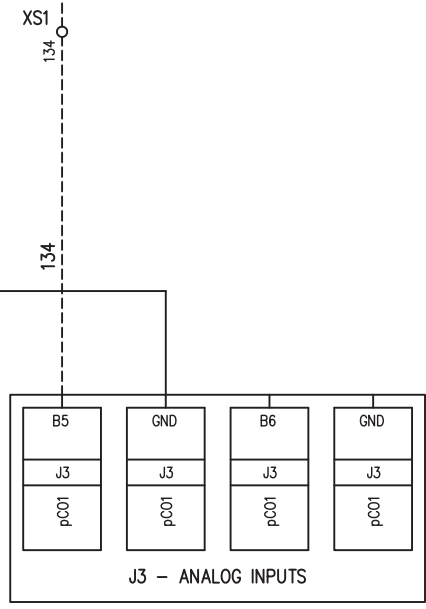


CIRCUIT 1
CONDENSER
PRESSURE
PROBE

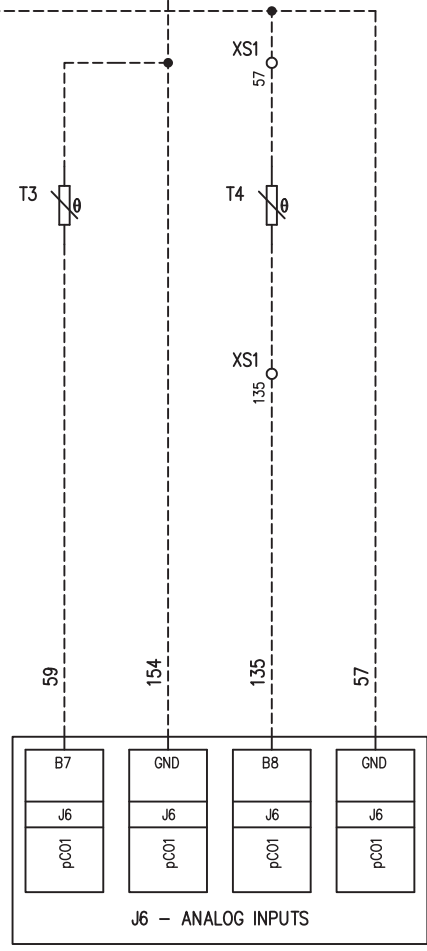
CIRCUIT 2
CONDENSER
PRESSURE
PROBE

REMOTE
SETPOINT
ADJUST
(4-20mA)

INLET
WATER
TEMPERATURE
PROBE



EVAPORATOR
OUTLET WATER
TEMPERATURE
PROBE



OUTDOOR
AIR
TEMPERATURE
PROBE

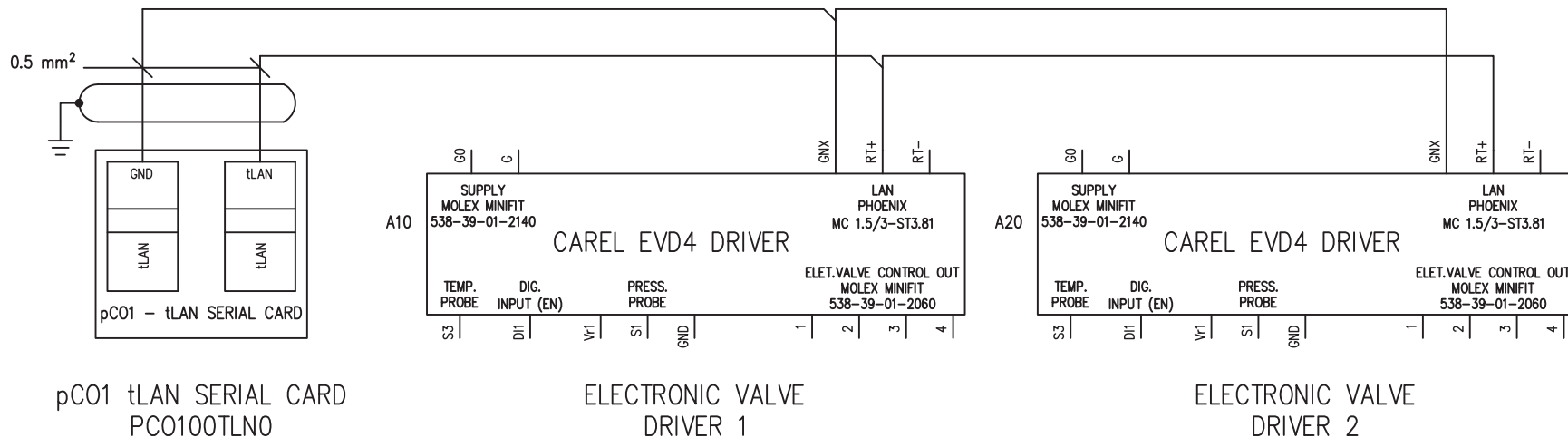
FREECOOLING
TEMPERATURE
PROBE

REVISION		DATE	14-05-2009
LAST	DATE	BY	DRAW. FF1
A	19-06-2009	FF1	CHECK FF1
			APPR. MM



PROBES		TOTAL SHEET	37
476FL SPECIAL VERSION - FUSES		CONTINUE	26
HF620C1034S		SHEET	25

tLAN CONNECTION



REVISION		DATE	14-05-2009
LAST	DATE	BY	DRAW. FF1
A	19-06-2009	FF1	CHECK FF1
		APPR.	MM



tLAN CONNECTION

476FL SPECIAL VERSION - FUSES

HF620C1034S

TOTAL SHEET	37
CONTINUE	27
SHEET	26

1

2

3

4

5

6

7

8

XS1 - JUNCTION BOX (INTERNAL USE ONLY)

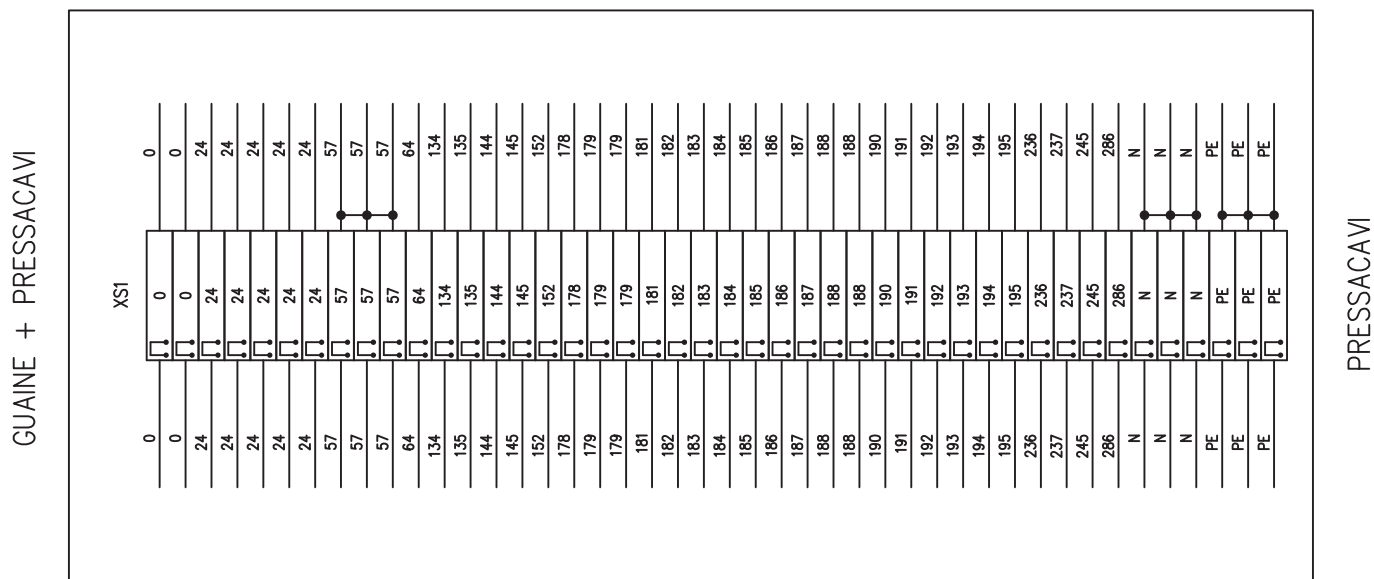
INTERNAL NOTE (INTERNAL USE ONLY)

- LUNGHEZZA GUAINE 4200mm
- LUNGHEZZA FILI FUORI DALLA GUAINA LATO QUADRO 2000mm
- USARE PRESSAGUAINE CHE POSSANO ESSERE MONTATI IN UN FORO DA 22mm
- GUAINE E PRESSAGUAINE RESISTENTI UV
- COMPLESSIVAMENTE DEVONO ESSERCI 18 PRESSACAVI PG13.5
- USARE SOLO FILI 1mm PER IL FILI ROSSI E DA 1.5mm PER QUELLI BLU E NERI
- USARE AL MASSIMO 3 GUAINE
- UTILIZARE MORSETTI TWIN DA 1.5mm
- SCATOLA 240X190X90 RESISTENTE UV (ELETTRICITÀ)

COMPONENTS CONNECTED

- PRESSOSTATI DI BASSA
- VALVOLE ELETTRONICHE
- SENSORI DI BASSA PER VALVOLA ELETTRONICA
- RESISTENZE
- FLUSSOSTATO 1 E 2
- VALVOLA FREECOOLING
- SONDE TEMPERATURA INGRESSO E USCITA
- SONDA FREECOOLING
- SONDE TEMPERATURA VALVOLA ELETTRONICA
- VALVOLE INVERSIONE CICLO

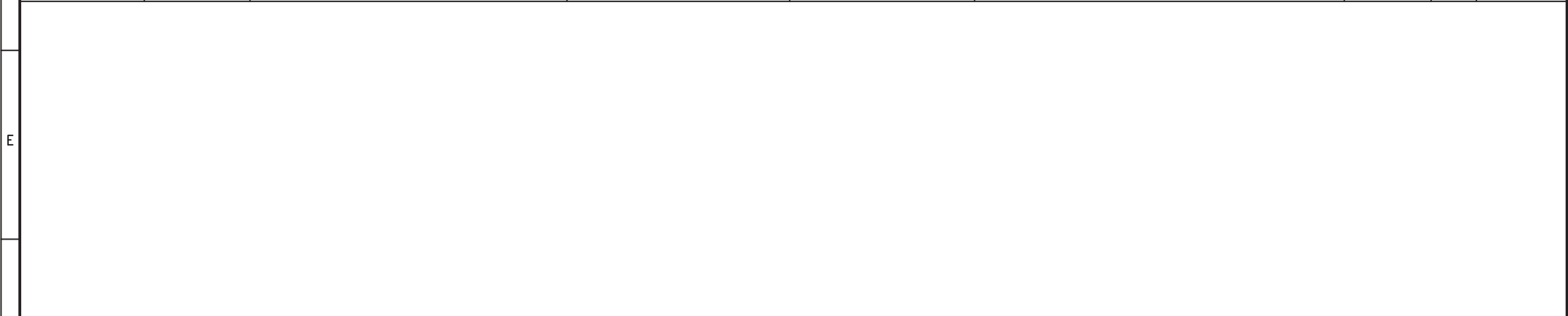
PRESSACAVI




SU QUESTO LATO NON DEVONO ESSERCI NE PRESSACAVI NE GUAINE

REVISION		DATE 14-05-2009						JUNCTION BOX KIT		TOTAL SHEET 37			
LAST	DATE	BY	DRAW.					476FL SPECIAL VERSION - FUSES		HF620C1034S		CONTINUE 29	
A	19-06-2009	FF1	CHECK					476FL SPECIAL VERSION - FUSES		HF620C1034S		SHEET 28	

	ID	FUNCTION	MANUFACTURER	CODE	DESCRIPTION	QUANTITY	U.M.	POSITION
A	K1	COMPRESSOR 1 CONTACTOR	SIEMENS	3RT1045-1AB00	TELER.37kW BOBINA 24V	1	PCE	
	K2	COMPRESSOR 2 CONTACTOR	SIEMENS	3RT1045-1AB00	TELER.37kW BOBINA 24V	1	PCE	
	K3	COMPRESSOR 3 CONTACTOR	SIEMENS	3RT1045-1AB00	TELER.37kW BOBINA 24V	1	PCE	
B	K4	COMPRESSOR 4 CONTACTOR	SIEMENS	3RT1045-1AB00	TELER.37kW BOBINA 24V	1	PCE	
	K5	COMPRESSOR 5 CONTACTOR	SIEMENS	3RT1045-1AB00	TELER.37kW BOBINA 24V	1	PCE	
	K6	COMPRESSOR 6 CONTACTOR	SIEMENS	3RT1045-1AB00	TELER.37kW BOBINA 24V	1	PCE	
	K1	COMPRESSOR 1 AUXILIARY SWITCH	SIEMENS	3RH1921-1FA22	CONT.AUS.FRONTALE 2NA+2NC	1	PCE	
C	K2	COMPRESSOR 2 AUXILIARY SWITCH	SIEMENS	3RH1921-1FA22	CONT.AUS.FRONTALE 2NA+2NC	1	PCE	
	K3	COMPRESSOR 3 AUXILIARY SWITCH	SIEMENS	3RH1921-1FA22	CONT.AUS.FRONTALE 2NA+2NC	1	PCE	
	K4	COMPRESSOR 4 AUXILIARY SWITCH	SIEMENS	3RH1921-1FA22	CONT.AUS.FRONTALE 2NA+2NC	1	PCE	
D	K5	COMPRESSOR 5 AUXILIARY SWITCH	SIEMENS	3RH1921-1FA22	CONT.AUS.FRONTALE 2NA+2NC	1	PCE	
	K6	COMPRESSOR 6 AUXILIARY SWITCH	SIEMENS	3RH1921-1FA22	CONT.AUS.FRONTALE 2NA+2NC	1	PCE	



F	REVISION		DATE	14-05-2009		MATERIALS LIST		TOTAL SHEET	37	
	LAST	DATE	BY	DRAW.		FF1			CONTINUE	30
	A	19-06-2009	FF1	CHECK		FF1			SHEET	29
				APPR.		MM	476FL SPECIAL VERSION - FUSES		HF620C1034S	

1

2

3

4


5

6

7

8

	ID	FUNCTION	MANUFACTURER	CODE	DESCRIPTION	QUANTITY	U.M.	POSITION
A	QS	MAIN SWITCH	SIEMENS	3KA71 41-4AA00	SEZIONATORE 4 POLI 630A	1	PCE	A
	QS	RED/YELLOW HANDLE	SIEMENS	3KA71 13-4AB00	MANOVRA GIALLO ROSSA	1	PCE	
	QS	EXTENSION	SIEMENS	3KA71 16-5AD00	PROLUNGA PER MANOVRA 400mm	1	PCE	
B	F1	COMPRESSOR 1 FUSES BOX	SIEMENS	3NP40 16-1CJ01	PORTAFUSIBILE TRIPOLARE NH PER FISSAGGIO SU BARRA	1	PCE	B
	F1	COMPRESSOR 1 FUSES	UN	-	FUSIBILE NH00 80A gG	3	PCE	
	F2	COMPRESSOR 2 FUSES BOX	SIEMENS	3NP40 16-1CJ01	PORTAFUSIBILE TRIPOLARE NH PER FISSAGGIO SU BARRA	1	PCE	
	F2	COMPRESSOR 2 FUSES	UN	-	FUSIBILE NH00 80A gG	3	PCE	
C	F3	COMPRESSOR 3 FUSES BOX	SIEMENS	3NP40 16-1CJ01	PORTAFUSIBILE TRIPOLARE NH PER FISSAGGIO SU BARRA	1	PCE	C
	F3	COMPRESSOR 3 FUSES	UN	-	FUSIBILE NH00 80A gG	3	PCE	
	F4	COMPRESSOR 4 FUSES BOX	SIEMENS	3NP40 16-1CJ01	PORTAFUSIBILE TRIPOLARE NH PER FISSAGGIO SU BARRA	1	PCE	
D	F4	COMPRESSOR 4 FUSES	UN	-	FUSIBILE NH00 80A gG	3	PCE	D
	F5	COMPRESSOR 5 FUSES BOX	SIEMENS	3NP40 16-1CJ01	PORTAFUSIBILE TRIPOLARE NH PER FISSAGGIO SU BARRA	1	PCE	
	F5	COMPRESSOR 5 FUSES	UN	-	FUSIBILE NH00 80A gG	3	PCE	
	F6	COMPRESSOR 6 FUSES BOX	SIEMENS	3NP40 16-1CJ01	PORTAFUSIBILE TRIPOLARE NH PER FISSAGGIO SU BARRA	1	PCE	
E	F6	COMPRESSOR 6 FUSES	UN	-	FUSIBILE NH00 80A gG	3	PCE	E

REVISION		DATE	14-05-2009		MATERIALS LIST			TOTAL SHEET	37	
LAST	DATE	BY	DRAW.		FF1				CONTINUE	31
A	19-06-2009	FF1	CHECK		FF1				SHEET	30
			APPR.		MM	476FL SPECIAL VERSION - FUSES				

1

2

3

4

5

6


7

8

	ID	FUNCTION	MANUFACTURER	CODE	DESCRIPTION	QUANTITY	U.M.	POSITION
A	F15	FANS 1 FUSES BOX	UN	-	BASE PORTAFUSIBILE TRIPOLARE 10,3X38	1	PCE	
	F15	FANS 1 FUSES	UN	-	FUSIBILE 32A gG 10.3X38	3	PCE	
B	F16	FANS 2 FUSES BOX	UN	-	BASE PORTAFUSIBILE TRIPOLARE 10,3X38	1	PCE	
	F16	FANS 2 FUSES	UN	-	FUSIBILE 32A gG 10.3X38	3	PCE	
	F18	24V FUSES BOX	UN	-	PORTAFUSIBILE UNIPOLARE 10.3X38	1	PCE	
	F18	24V FUSES	UN	-	FUSIBILE 4A gG 10,3X38	1	PCE	
C	F19	24V FUSES BOX	UN	-	PORTAFUSIBILE UNIPOLARE 10.3X38	1	PCE	
	F19	24V FUSES	UN	-	FUSIBILE 16A gG 10,3X38	1	PCE	
	F17	TR+RSF FUSES BOX	UN	-	BASE PORTAFUSIBILE TRIPOLARE 10,3X38	1	PCE	
	F17	TR+RSF FUSES	UN	-	FUSIBILE 6A gG 10.3X38	3	PCE	
D	F20	230V FUSES BOX	UN	-	PORTAFUSIBILE UNIPOLARE 10.3X38	1	PCE	
	F20	230V FUSES	UN	-	FUSIBILE 2A gG 10,3X38	1	PCE	
	TR1	24VAC AUXILIARY TRASFORMER	-	-	TRASF. 500VA IN=400V, OUT1=24V-100VA, OUT2=24VAC-400VA	1	PCE	
E	TR2	230VAC AUXILIARY TRASFORMER	-	-	TRASF. 200VA IN=400V, OUT=230V	1	PCE	
F	REVISION		DATE	MATERIALS LIST				TOTAL SHEET
	LAST	DATE	BY					37
	A	19-06-2009	FF1					CONTINUE
			CHECK	476FL SPECIAL VERSION - FUSES				32
			APPR.	HF620C1034S				SHEET
			MM					31
	1	2	3	4	5	6	7	8



	ID	FUNCTION	MANUFACTURER	CODE	DESCRIPTION	QUANTITY	U.M.	POSITION
A	KA1	HIGH PRESSURE 1 RELAY	FINDER	5534.8024	RELE' 4 CONTATTI BOBINA 24VAC	1	PCE	
	KA1	HIGH PRESSURE 1 RELAY SOCKET	FINDER	94.04	ZOCCOLO PER RELE' 5534	1	PCE	
B	KA2	HIGH PRESSURE 2 RELAY	FINDER	5534.8024	RELE' 4 CONTATTI BOBINA 24VAC	1	PCE	
	KA2	HIGH PRESSURE 2 RELAY SOCKET	FINDER	94.04	ZOCCOLO PER RELE' 5534	1	PCE	
	KA6	GENERAL ALARM RELAY	FINDER	4052.8024	RELE' 2 CONTATTI BOBINA 24VAC	1	PCE	
	KA6	GENERAL ALARM RELAY'S SOCKET	FINDER	95.05	ZOCCOLO PER RELE' 4052	1	PCE	
C	TS1	ELECTRICAL BOX FAN THERMOSTAT	STEGO	01141.0-00	TERMOANATO NO 0-60°C	1	PCE	
	TS2	ELECTRICAL BOX HEATER THERMOSTAT	STEGO	01140.0-00	TERMOANATO NC 0-60°C	1	PCE	
	RQ	ELECTRICAL BOX HEATER	STEGO	14007.0-00	RESISTENZA ANTICONDENSA 100W 230V	1	PCE	
D	MQ	ELECTRICAL BOX FAN	HIREF	HF40000420	VENTILATORE QUADRO ELETTRICO 230VAC	1	PCE	
	Q9	CRANKCASE HEATERS SWITCH	SIEMENS	5SY6-106-7	INT.AUT.1 POLO 6A CURVA C	1	PCE	
	Q9	Q9 AUX SWITCH	-	-	CONTATTO AUSILIARIO LATERALE 1NA+1NC	1	PCE	
	Q10	HEATERS SWITCH	SIEMENS	5SY6-116-7	INT.AUT.1 POLO 16A CURVA C	1	PCE	
	Q10	Q10 AUX SWITCH	-	-	CONTATTO AUSILIARIO LATERALE 1NA+1NC	1	PCE	
E	KA7	POWER ON RELAY	FINDER	4052.8230	RELE' 2 CONTATTI BOBINA 230VAC	1	PCE	
	KA7	POWER ON RELAY'S SOCKET	FINDER	95.05	ZOCCOLO PER RELE' 4052	1	PCE	
	H1	WARNING SIGNAL	-	-	LAMPADA+PORTALAMPADA GIALLA ROTONDA IP65 24V	1	PCE	

F	REVISION		DATE	14-05-2009		MATERIALS LIST			TOTAL SHEET 37		
	LAST	DATE	BY	DRAW.		FF1				CONTINUE 33	
	A	19-06-2009	FF1	CHECK		FF1				SHEET 32	
				APPR.		MM	476FL SPECIAL VERSION - FUSES			HF620C1034S	

1

2

3

4

5

6

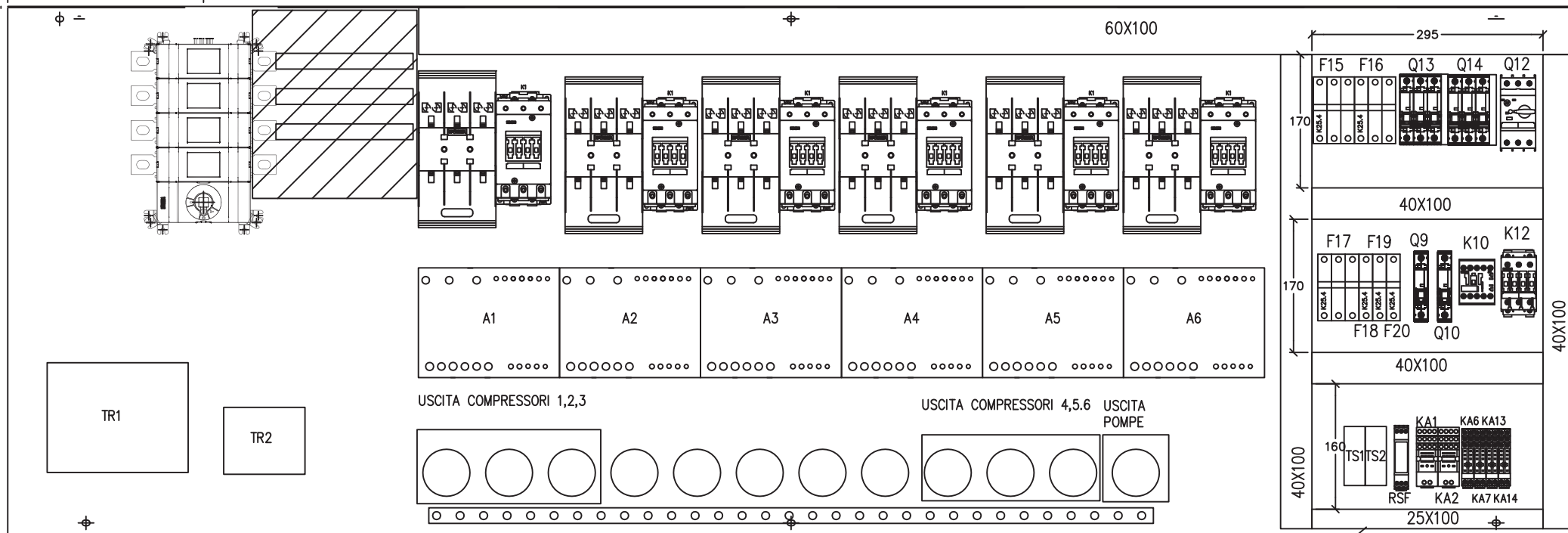
7

8

USARE SEZIONATORE SOCOMEC

- VIETATO ABB

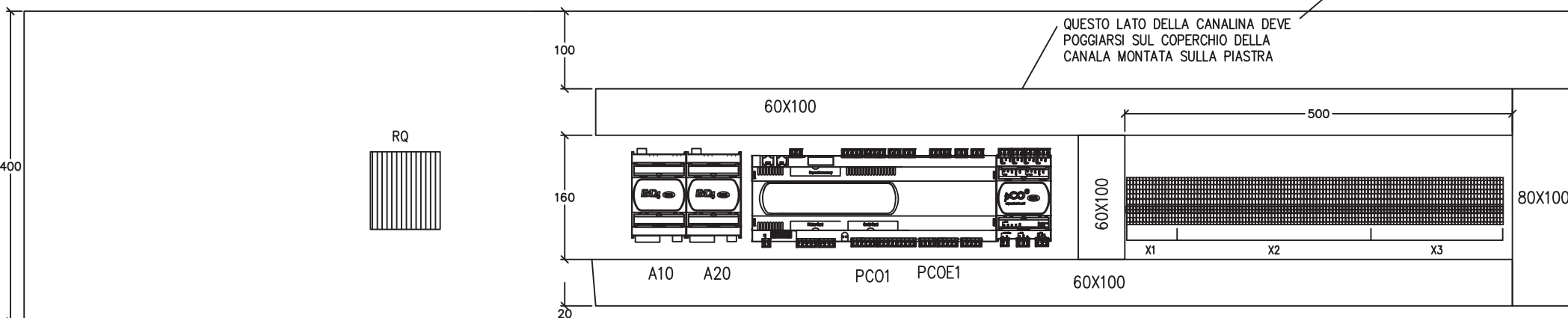
PIASTRA DI FONDO



USCITA COMPRESSORI 1,2,3

USCITA COMPRESSORI 4,5,6 USCITA POMPE

QUESTO LATO DELLA CANALINA DEVE POGGIARSI SUL COPERCHIO DELLA CANALA MONTATA SULLA PIASTRA



BASE DELLA CASSA

REVISION		DATE	14-05-2009
LAST	DATE	BY	DRAW. FF1
A	19-06-2009	FF1	CHECK FF1
			APPR. MM



LAYOUT

476FL SPECIAL VERSION - FUSES

HF620C1034S

TOTAL SHEET 37

CONTINUE 35

SHEET 34

1 2 3 4 5 6 7 8

COMPRESSORE

L (mm)

CAVI/COLORE/SEZIONE

1	2500	1,2,3 NERO 25mm; PE 16mm; 0,24,24,8 ROSSO 1mm; 114 NERO 1mm; N BLU 1mm
2	3000	9,10,12 NERO 25mm; PE 16mm; 0,24,8,17 ROSSO 1mm; 115 NERO 1mm; N BLU 1mm
3	3500	18,19,20 NERO 25mm; PE 16mm; 0,24,17,26 ROSSO 1mm; 116 NERO 1mm; N BLU 1mm
4	2500	27,28,29 NERO 25mm; PE 16mm; 0,24,24,36 ROSSO 1mm; 117 NERO 1mm; N BLU 1mm
5	3000	37,38,39 NERO 25mm; PE 16mm; 0,24,36,44 ROSSO 1mm; 118 NERO 1mm; N BLU 1mm
6	3500	45,46,47 NERO 25mm; PE 16mm; 0,24,44,56 ROSSO 1mm; 119 NERO 1mm; N BLU 1mm
*	5000	67,69,7,73,75,77 NERO 10mm; 2XPE 10mm; 98,0,99,107,24,108,109,110,111 ROSSO 1mm 230,231 GRIGIO *=ALIMENTAZIONE E SEGNALI INVERTER POMPE

REVISION

DATE 14-05-2009

LAST

DATE

BY

DRAW. FF1



CABLES

TOTAL SHEET 37

CONTINUE 36

A

19-06-2009

FF1

CHECK FF1

APPR. MM

476FL SPECIAL VERSION - FUSES

HF620C1034S

SHEET

35

1

2

3

4

5


6

7

8


NOTE (INTERNAL USE ONLY)

- | | | |
|------|----|--|
| ITEM | 1 | FORNIRE TUTTI I MATERIALI |
| | 2 | NON FORNIRE NE PREDISPORRE I FILI TRATTEGGIATI |
| | 3 | FORNIRE UN KIT DI FUSIBILI DI RICAMBIO CONTENENTE 1 FUSIBILE PER TIPO E 3 FUSIBILI PER I COMPRESSORI |
| | 4 | FORNIRE IL CABLAGGIO DELLE EVD4 COMPLETO DI CONNETTORI |
| | 5 | IL VENTILATORE DEVE ESSERE MONTATO CON FLUSSO ARIA VERSO L'INTERNO |
| | 6 | RISPETTARE IL PIÙ POSSIBILE IL LAYOUT |
| | 7 | TUTTE LE QUAINI E I PRESSAGUAINI DEVONO ESSERE RESISTENTI UV |
| | 8 | LA FORNITURA DEL QUADRO DEVE INCLUDERE IL KIT DI CABLAGGIO XS1 (CASSETTA+GUAINI+MORSETTI) |
| | 9 | IL KIT DI CABLAGGIO DEVE ESSERE NELLO STESSO IMBALLO DEL QUADRO |
| | 10 | MONTARE I SOFTSTARTER FORNITI IN CONTO LAVORO |
| | 11 | FORNIRE ANCHE LA GUAINA PER I CAVI DEGLI INVERTER |

F	REVISION		DATE	14-05-2009		INTERNAL NOTE		TOTAL SHEET	37		
	LAST	DATE	BY	DRAW.		FF1	CONTINUE		37		
	A	19-06-2009	FF1	CHECK		FF1	476FL SPECIAL VERSION - FUSES		HF620C1034S	SHEET	36
				APPR.		MM					
1	2	3	4	5	6	7	8				

REVISION HISTORY (ONLY FOR INTERNAL USE)

REVISION	DATE	MODIFICATIONS	BY
REV./	14-05-2009	-FIRST RELEASE	FF1
REV.A	19-06-2009	-AGGIUNTA VENTOLA VANO INVERTER -CORRETTO CABLAGGIO SEGNALE 0-10V INVERTER	FF1

A	REVISION	DATE	14-05-2009	REVISION HISTORY	TOTAL SHEET	37
B	LAST	DATE	BY		CONTINUE	
C	A	19-06-2009	FF1	476FL SPECIAL VERSION - FUSES	HF620C1034S	SHEET
D	1	2	3	4	5	6
E	7	8	9	10	11	12
F	13	14	15	16	17	18