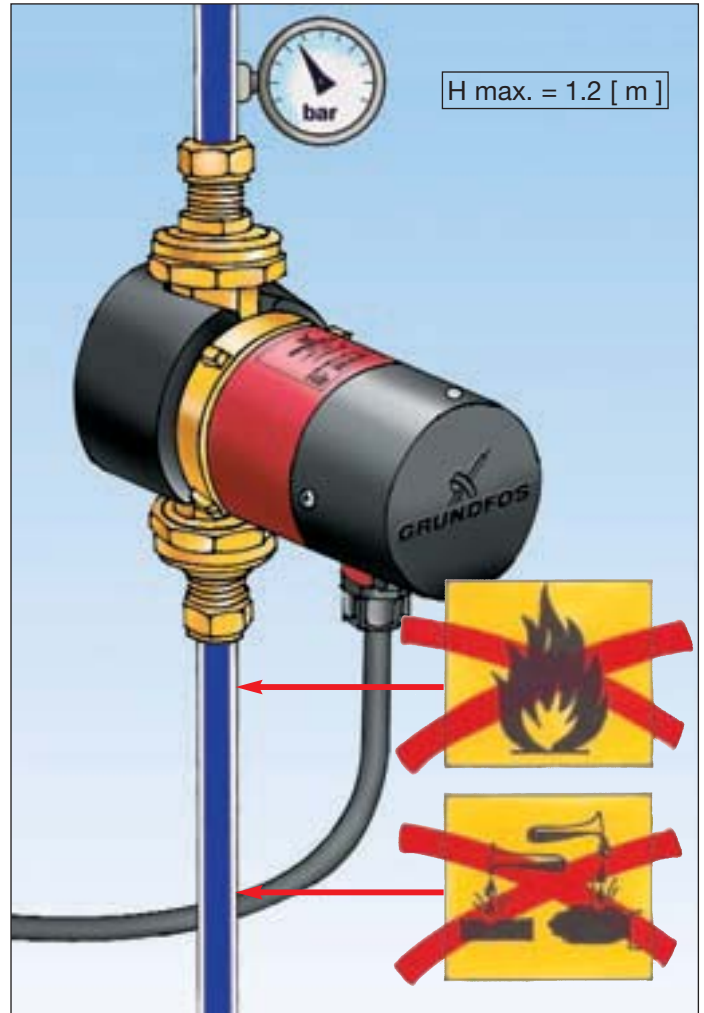
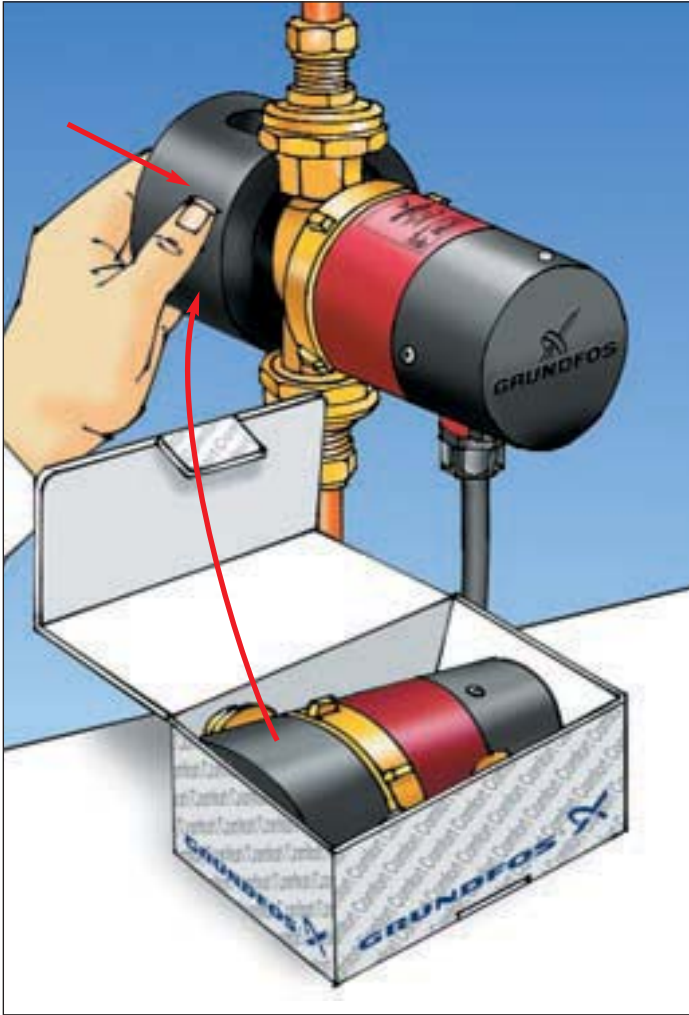


Grundfos Comfort

GB	Grundfos declares that these products are in conformity with the following EU directives:	Grundfos izjavlja, da so ti izdelki v skladu z naslednjimi smernicami EU:	SI
D	Konformitätserklärung. Grundfos erklärt, daß diese Produkte mit den folgenden EU-Richtlinien übereinstimmen:	Grundfos izjavlja, da su ovi proizvodi u saglasnosti sa sledećim smernicama EU:	HR
F	Grundfos déclare que ces produits sont en conformité avec les directives de l'Union Européenne suivantes:	Grundfos izjavlja, da su ovi proizvodi u saglasnosti sa sledećim smernicama EU:	YU
I	Grundfos dichiara che questi prodotti sono conformi alle seguenti Direttive della Comunità Europea:	Societatea Grundfos declară că aceste produse sunt în conformitate cu următoarele directive ale Uniunii Europene:	RO
E	Grundfos declara que estos productos son conformes con las siguientes Directivas Europeas:	Исправно је изражено да се ови производи конформирају са следећим директивима ЕУ:	BG
P	A Grundfos declara que estos productos están en conformidad con las siguientes directivas EU:	Firma Grundfos prohlašuje, že výrobky jsou v souladu s následujícími směrnici EU:	CZ
GR	H Grundfos izjavlja da ta proizvodi su u skladu sa sledećim smernicama EU:	Firma Grundfos prehlásuje, že výrobky sú v súlade s nasledovnými smernicami EU:	SK
NL	Grundfos verklaart, dat deze producten in overeenstemming zijn met de volgende richtlijnen:	Grundfos bu örünlerin Avrupa Birliğinin aşağıdaki Direktiflerine uygunluğunu onaylar:	TR
S	Grundfos förklarar att dessa produkter är i överensstämmelse med följande EU direktiv:	Grundfos kinnitab, et antud tooted vastavad järgmistele EU normidele:	EE
SF	Grundfos väsklaras, att dessa produkter är i överensstämmelse med följande EU direktiv:	Firma Grundfos pariba, ka izstrādājumi atbilst šakajām ES normām:	LV
DK	Grundfos erklærer, at disse produkter er i overensstemmelse med følgende EU direktiver:	Grundfos pavirtina, kad šie produktai atitinka šeimiai išvardintose ES normos:	LT
PL	Firma Grundfos oświadcza, że dane wyrobki są zgodne z niniejszymi wytycznymi UE:	90/27/EEC (EN 290) 80/336/EEC (EN 50 081-1, EN 50 082-2) 73/23/EEC (EN 60 335-1, EN 60 335-2-81)	
RU	Фирма Grundfos заявляет, что данные изделия соответствуют следующим требованиям ЕУ:	Prisagāties, 1st November 2000	
H	Mi, a Grundfos kijelentjük, hogy ezen termékek megfelelnek az Európai Unió követendő irányelveinek:	 Jørn Aagaard Technical Manager	

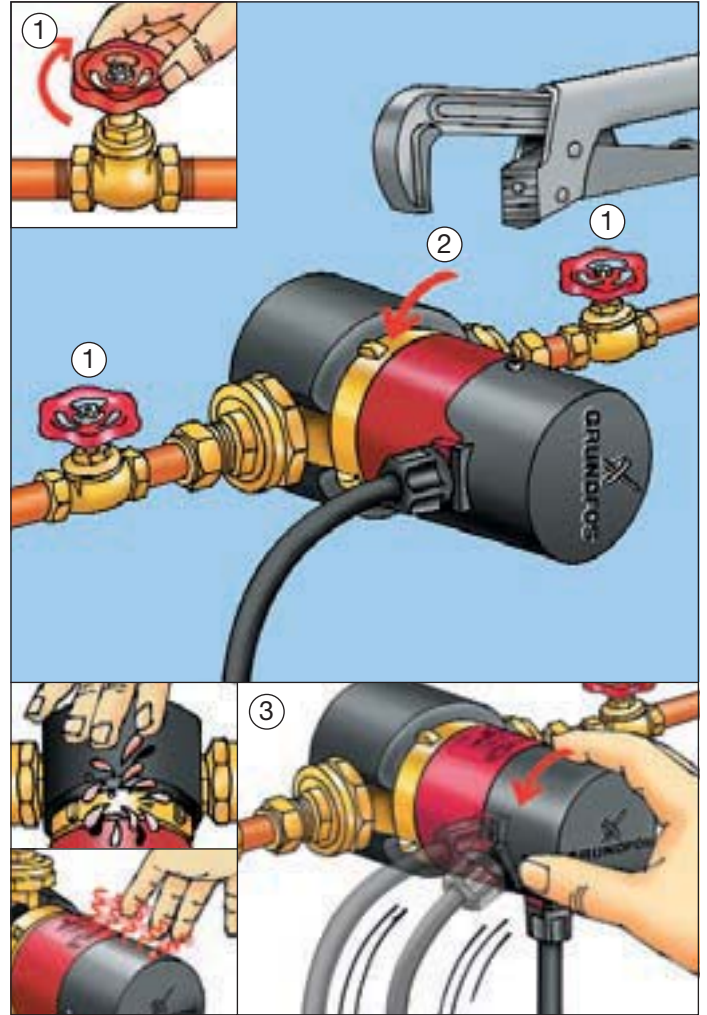
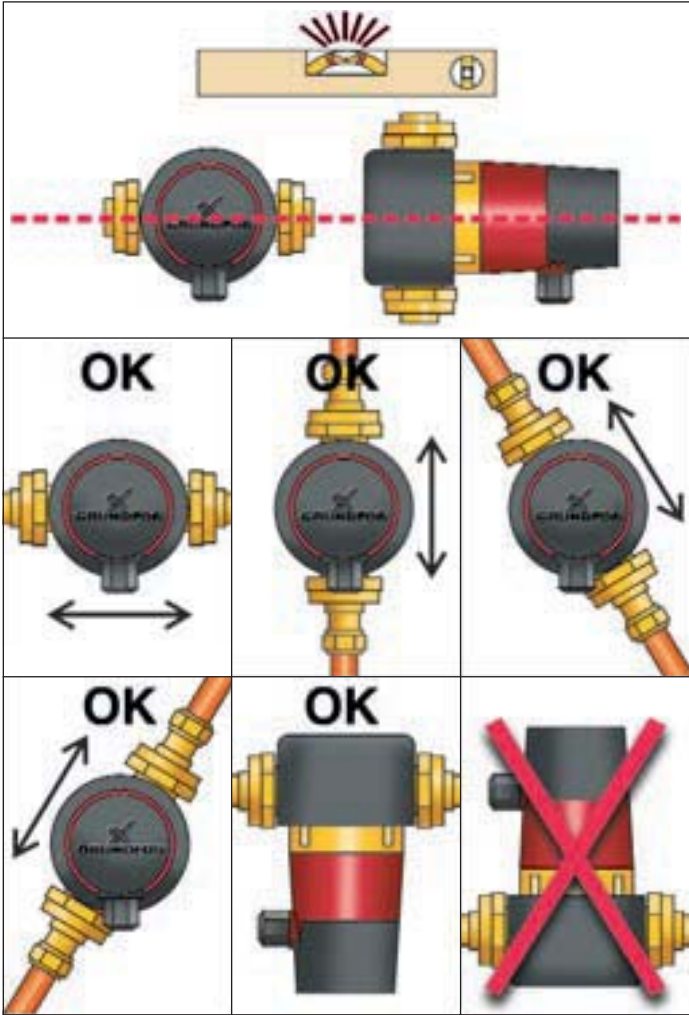


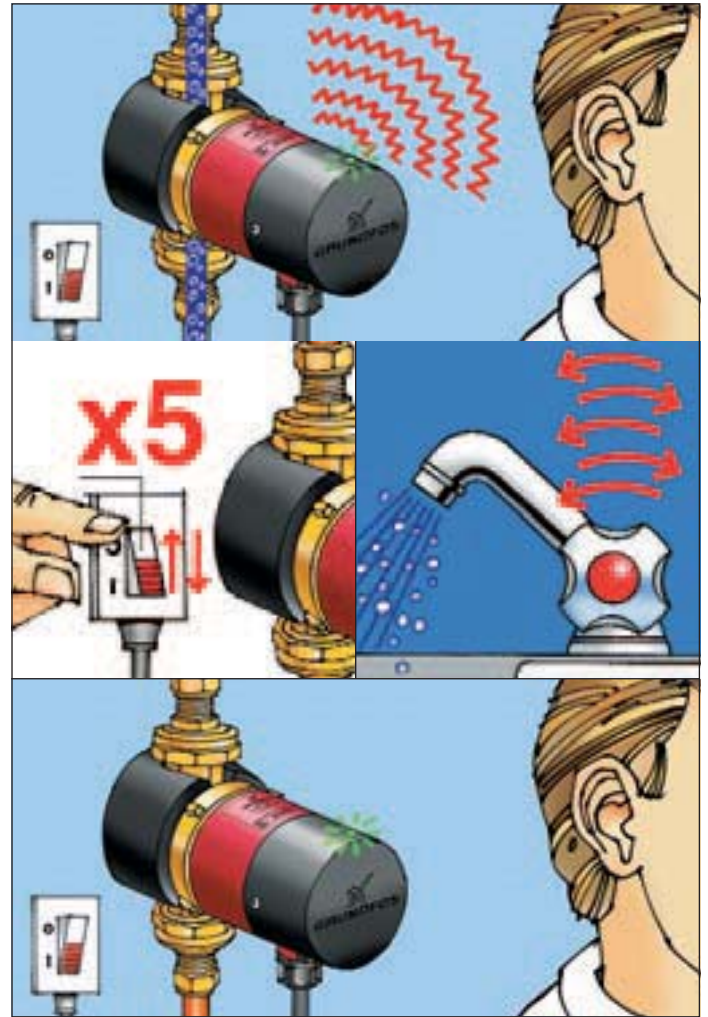
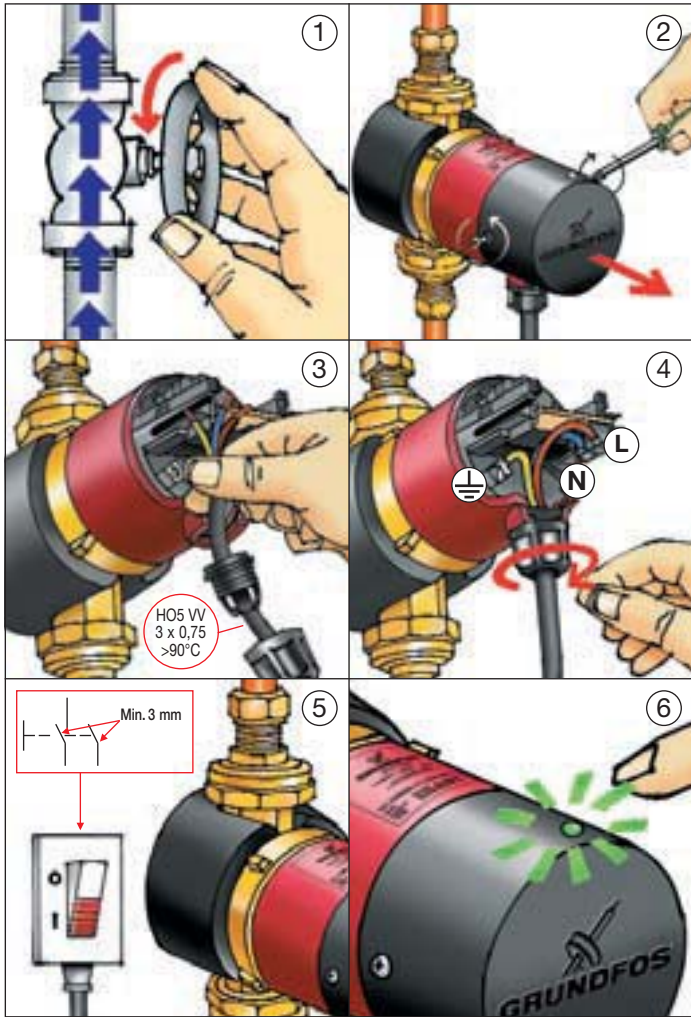


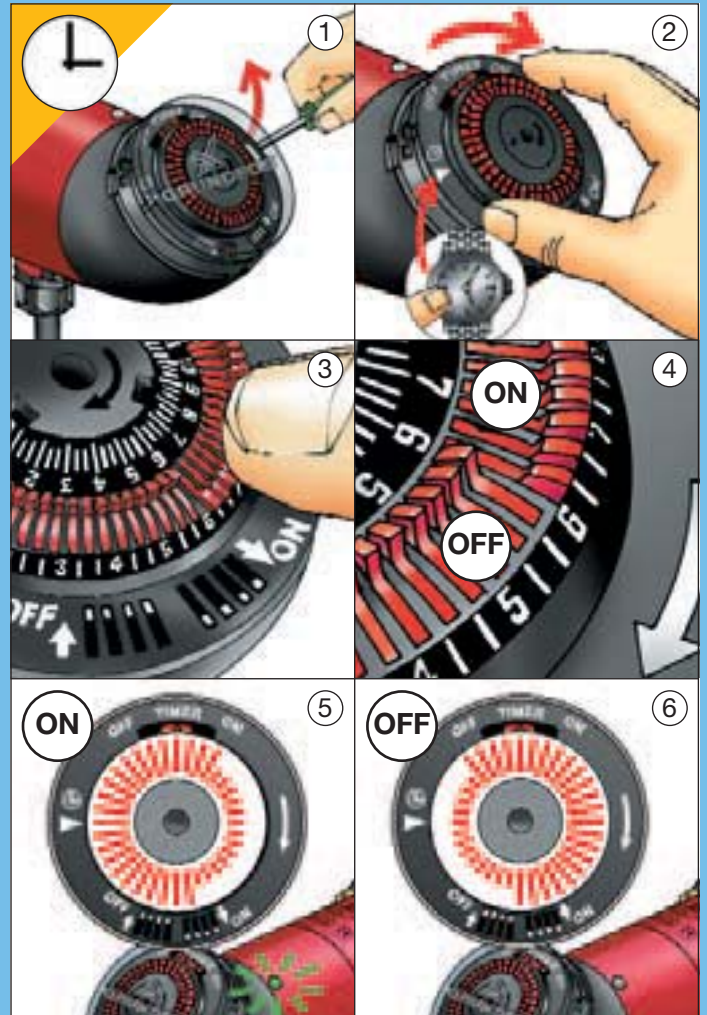
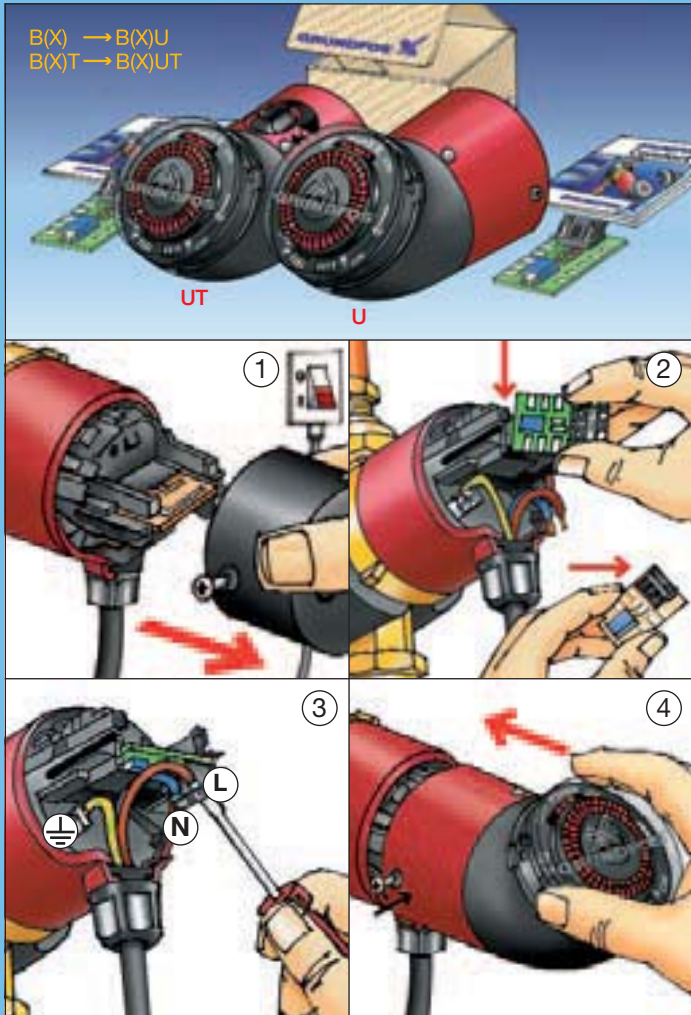
Class TF95
t₁ max. 95°C

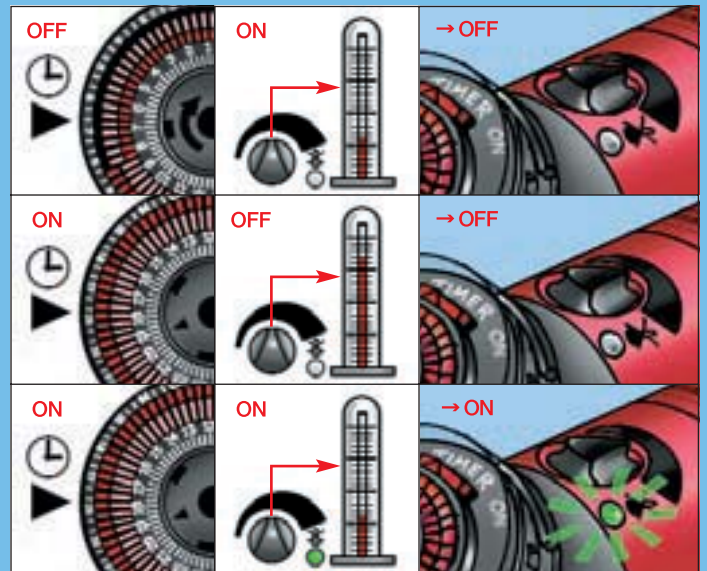
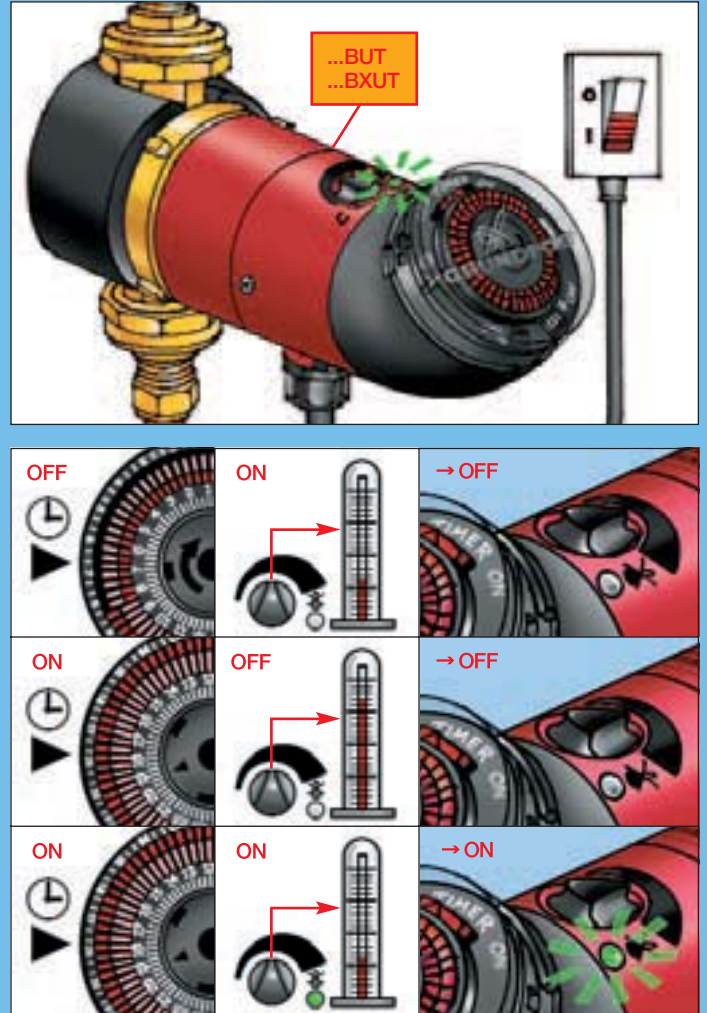
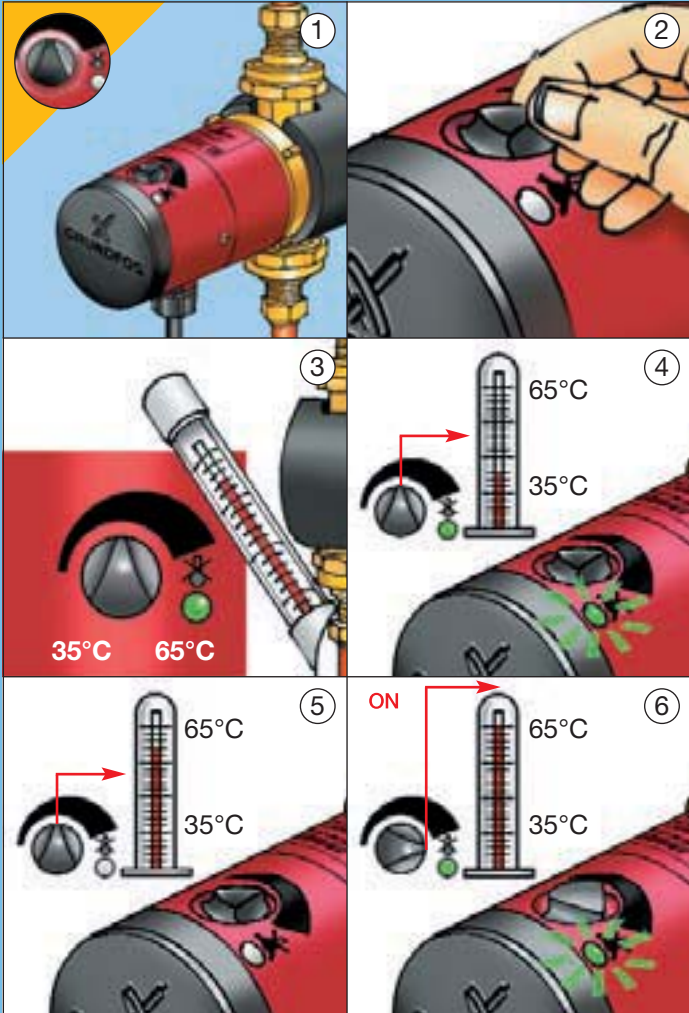
$t_1 \geq t_2$

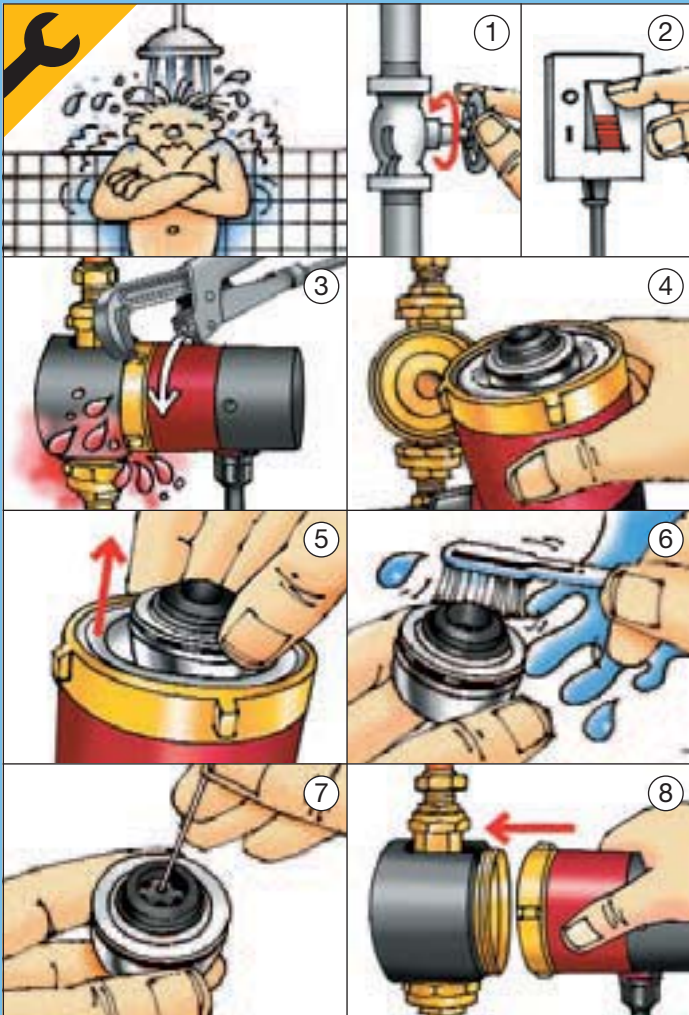
	C°					
t ₁	2	20	40	65	80	95
t ₂	0	20	40	40	40	40











Poziom ciśnienia akustycznego
Poziom ciśnienia akustycznego pompy nie przekracza 43 dB(A).

(PL)

Уровень шума
Уровень шума насоса не превышает 43 дБ(А).

(RU)

Zajazint
A szivattyú zajszintje alacsonyabb, mint 43 dB(A).

(H)

Sound pressure level
The sound pressure level of the pump is lower than 43 dB(A).

(GB)

Nivo hruposti
Nivo hruposti leži pod 43 dB(A).

(SI)

Schalldruckpegel
Der Schalldruckpegel der Pumpe liegt unter 43 dB(A).

(D)

Razina zvučnog tlaka
Razina zvučnog tlaka crpke leži ispod 43 dB(A).

(HR)

Niveau de pression acoustique
Le niveau de pression acoustique du circulateur est inférieur à 43 dB(A).

(F)

Nivo zvučnih pritiska
Nivo zvučnih pritiska pumpe ispod 43 dB(A).

(YU)

Livello di rumorosità
Il livello di pressione sonora della pompa è inferiore a 43 dB(A).

(I)

Nivelul sonor
Nivelul de zgomot al pompei este mai mic de 43 dB(A).

(RO)

Nivel de ruido
El nivel de ruido de la bomba es inferior a 43 dB(A).

(E)

Heslo na šumu
Heslo na šumu na rošňata e nižé 43 dB(A).

(CZ)

Nivel de pressão sonora
O nível de pressão sonora produzida pelo circulador é inferior a 43 dB(A).

(P)

Akustický tlak
Hladina akustického tlaku je pod hranicí 43 dB(A).

(SK)

Σημείο ηχητικής πίεσης
Το επίπεδο ηχητικής πίεσης του κυκλοφορητή είναι χαμηλότερο από 43 dB(A).

(GR)

Akustický tlak
Hladina akustického tlaku je pod hranicou 43 dB(A).

(SK)

Getuliedrukkniveau
Het geluidsdrukkniveau van de pomp is lager dan 43 dB(A).

(NL)

Görültü seviyesi
Pompamızın görültü seviyesi 43 dB(A)'den azdır.

(TR)

Ljudtrycksnivå
Pumpans ljudtrycksnivå är mindre än 43 dB(A).

(S)

Mérítase
Pumbe mérítase ei ölet 43 dB(A).

(EE)

Äänenpainetaso
Pumpun äänenpainetaso on alempi kuin 43 dB(A).

(SF)

Triukšņu līmenis
Sūkņa triukšņu līmenis nepārsniedz 43 dB(A).

(LV)

Lydtrykkniveau
Pumpens lydtrykkniveau er lavere end 43 dB(A).





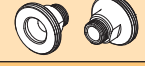
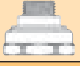


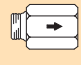



(DK)

Triukšmo lygis
Siurblio kaliamas triukšmas neviršija 43 dB(A).

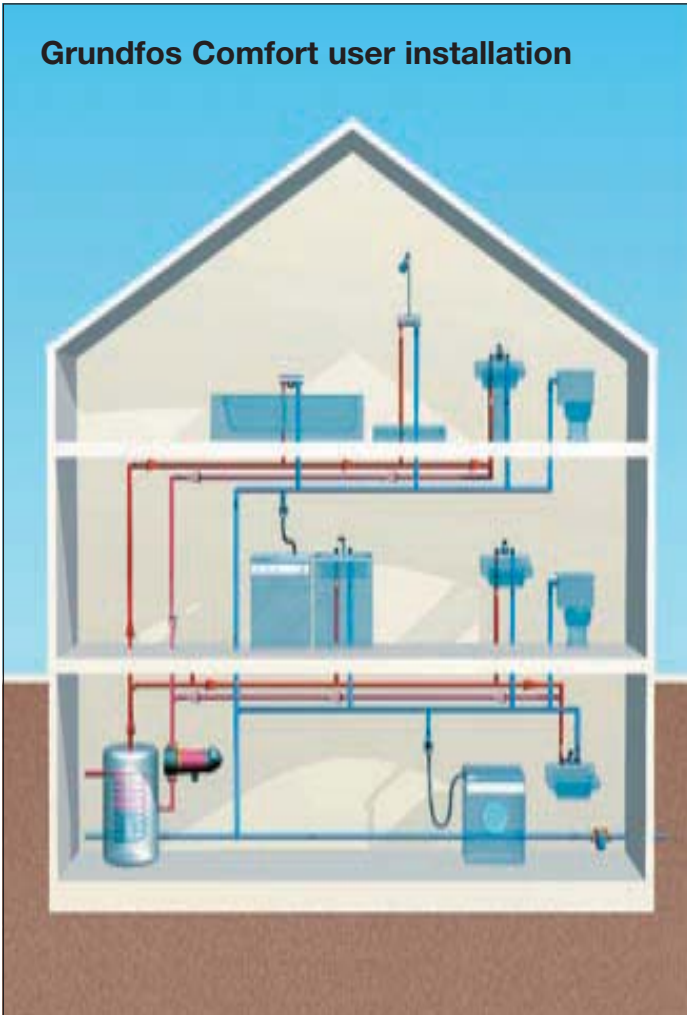
(LT)

Replacement

	UP 15 - 14 B		UP 20 - 14 BX	
		BT BU BUT		BXT BXU BXUT
PUMPS	L	80	110	
BUDERUS				
BUZ15	80	OK		
BU-Z15A 15C	140	+ 96 43 39 13		
EMB				
NWS 20-6	140	+ 96 43 39 13		
GRUNDFOS				
UP 15-13 B (U)	86	OK		
UP 15-13 BX (U)	130	+ 96 43 39 04		
UP 20-07N, UP 20-15N	150	+ 96 43 39 11	+ 96 43 65 59	
KSB				
R12-1E	140	+ 96 43 39 13		
Riotherm C12/15 (T)	150	+ 96 43 39 11	+ 96 43 65 59	
LOEWE				
C151 (U)	86	OK		
C151 X (U)	130	+ 96 43 39 04		
SPECK				
BN 20/11, 20/22	150	+ 96 43 39 11	+ 96 43 65 59	
VORTEX				
BW(Z) 150, 151 R 1/2"	80	OK		
BW(Z) 152, 153 R 1/2"	80	OK		
BW(Z) 150, 151 V	110		OK	
BW(Z) 152, 153 V	110		OK	

UP 15 - 14 B	UP 20 - 14 BX
	
Product no. 96 43 39 11 Extension set, Rp 1/2"/G 1 1/4", length = 35 mm each	Product no. 96 43 65 59 Extension set, Rp 1/4"/G 1 1/4", length = 40 mm
	
Product no. 96 43 39 12 Extension set, Rp 1/2"/G 1 1/2", length = 25 mm each	Product no. 96 43 39 07 Union set, G 1 1/4 x 15 mm int./ R 1/2" ext.
	
Product no. 96 43 39 13 Extension set, Rp 1/2"/G 1", length = 30 mm each	Product no. 96 43 39 08 Union set, G 1 1/4 x Rp 3/4 int.
	
Product no. 96 43 39 04 Non-return valve 1/2"	Product no. 96 43 39 09 Union set, G 1 1/4 int. x Rp 1/2 / R 3/4 ext.
	
Product no. 96 43 39 05 Shut-off-valve 1/2"	Product no. 96 43 39 10 Union set, G 1 1/4 x 22 mm int.
	

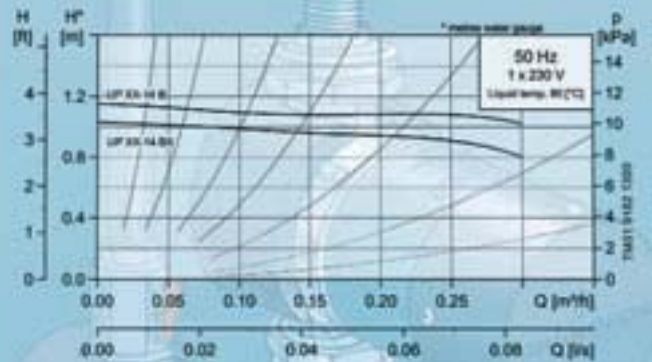
Grundfos Comfort user installation



Only GB

Supplementary page for Grundfos Comfort

Performance



Recommended applications

Open and closed systems. Domestic hot water systems in single- and two-family houses. Cooling and air-conditioning systems.

Minimum dynamic head for the inlet water:

Liquid temperature	85°C	95°C
Inlet pressure	0.5 m	2.8 m
	0.049 bar	0.27 bar

Maximum system pressure: PN 10, 102 metres water gauge.

The maximum surface temperature will not exceed 125°C.

Do not run the pump without water.