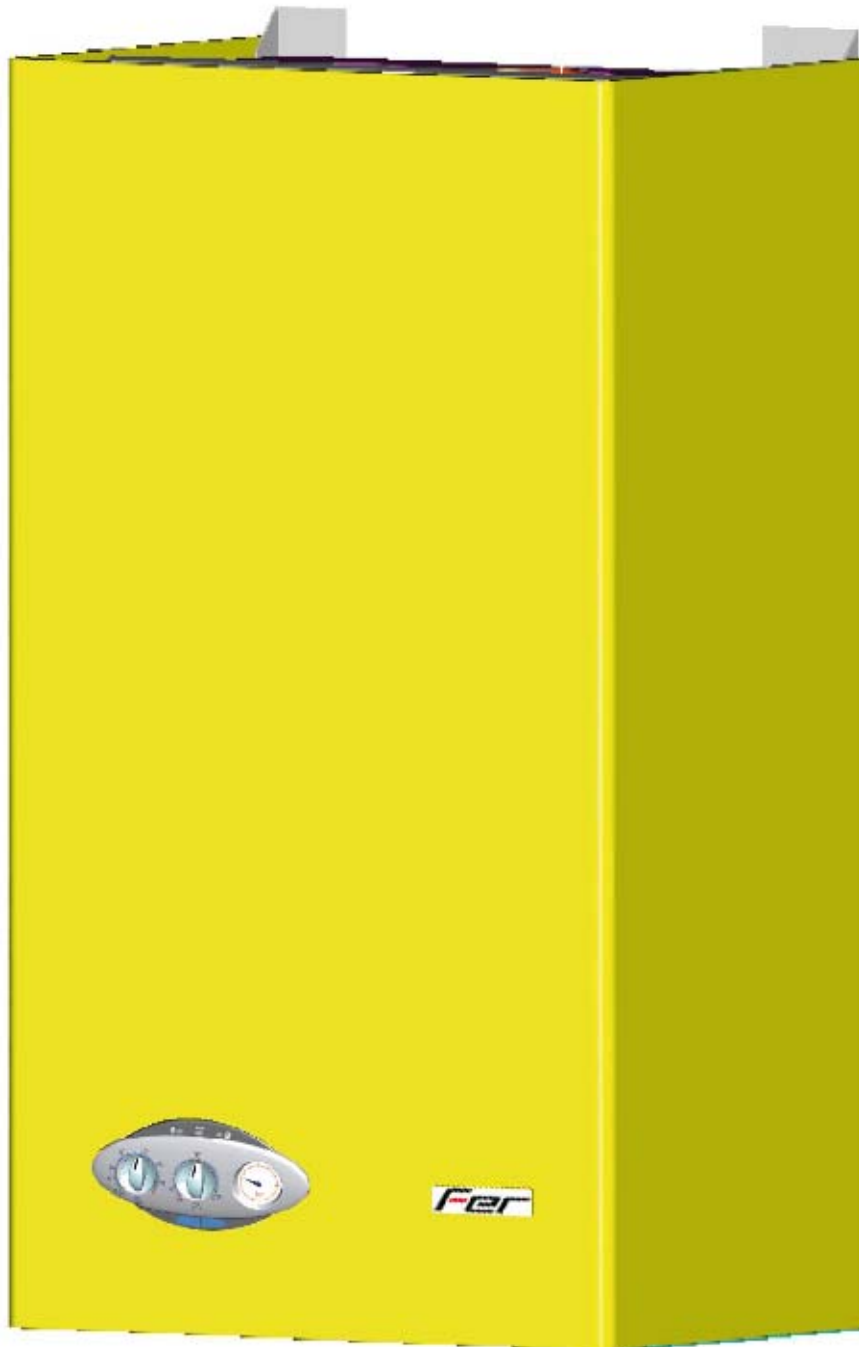


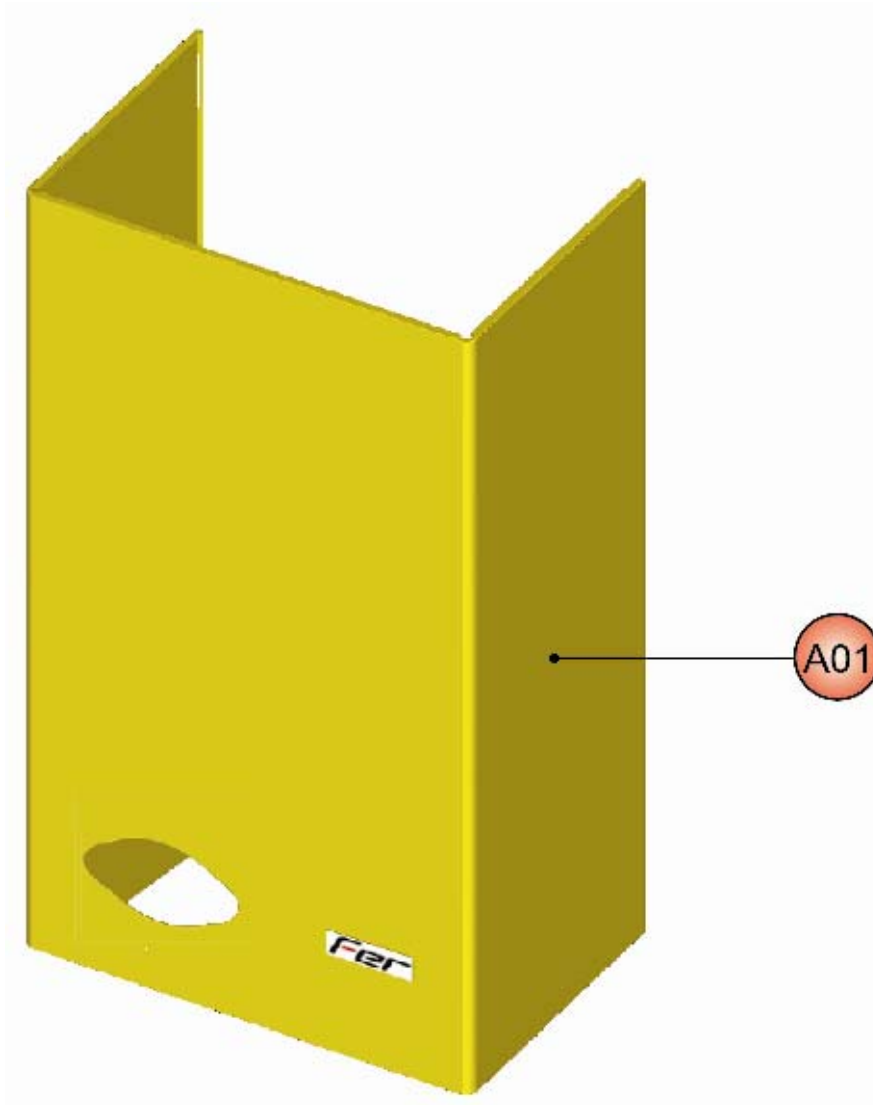


FEReasy F32

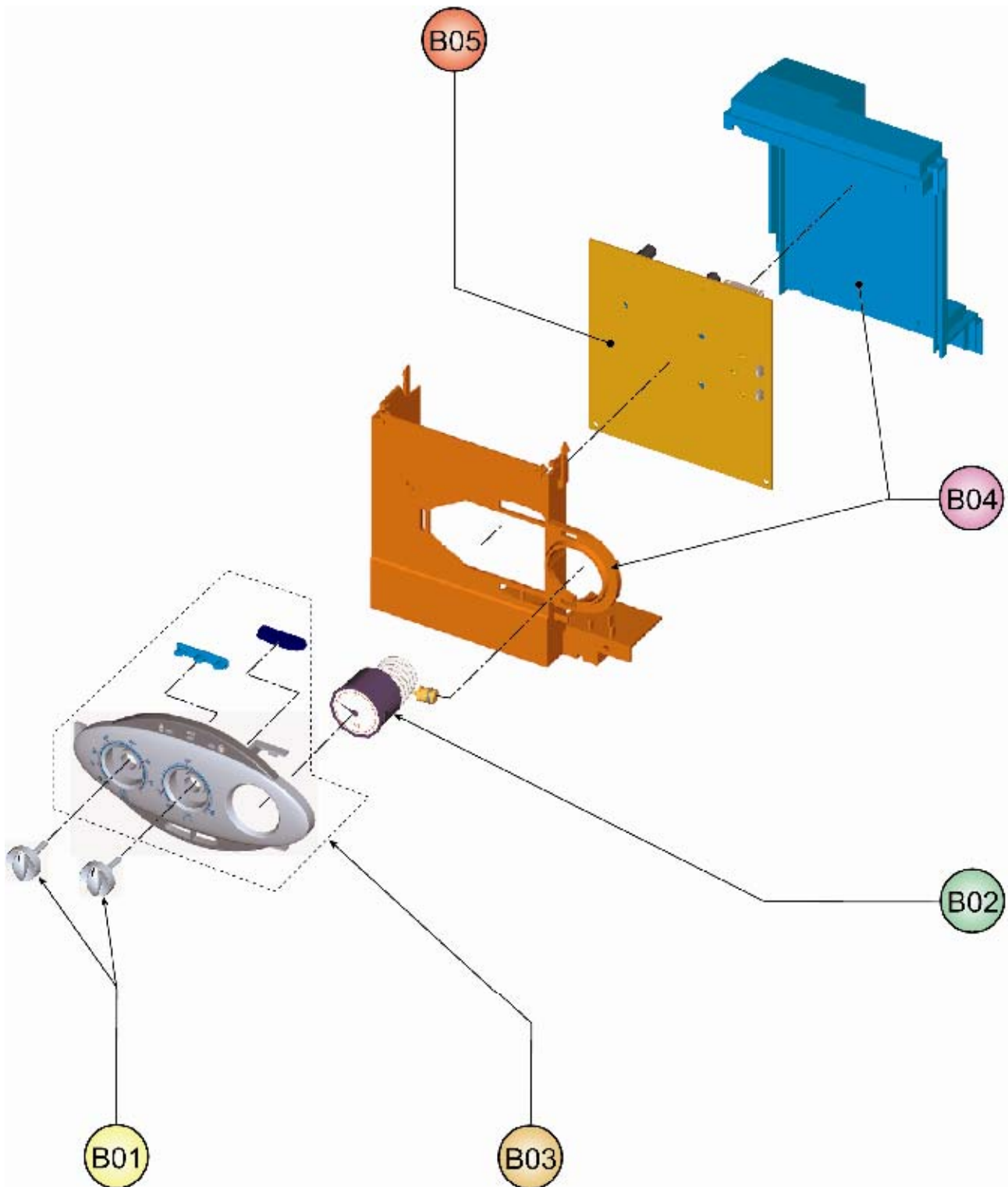


CODICE	EDIZIONE	MERCATO
30K0301003	01/12/2008	A1

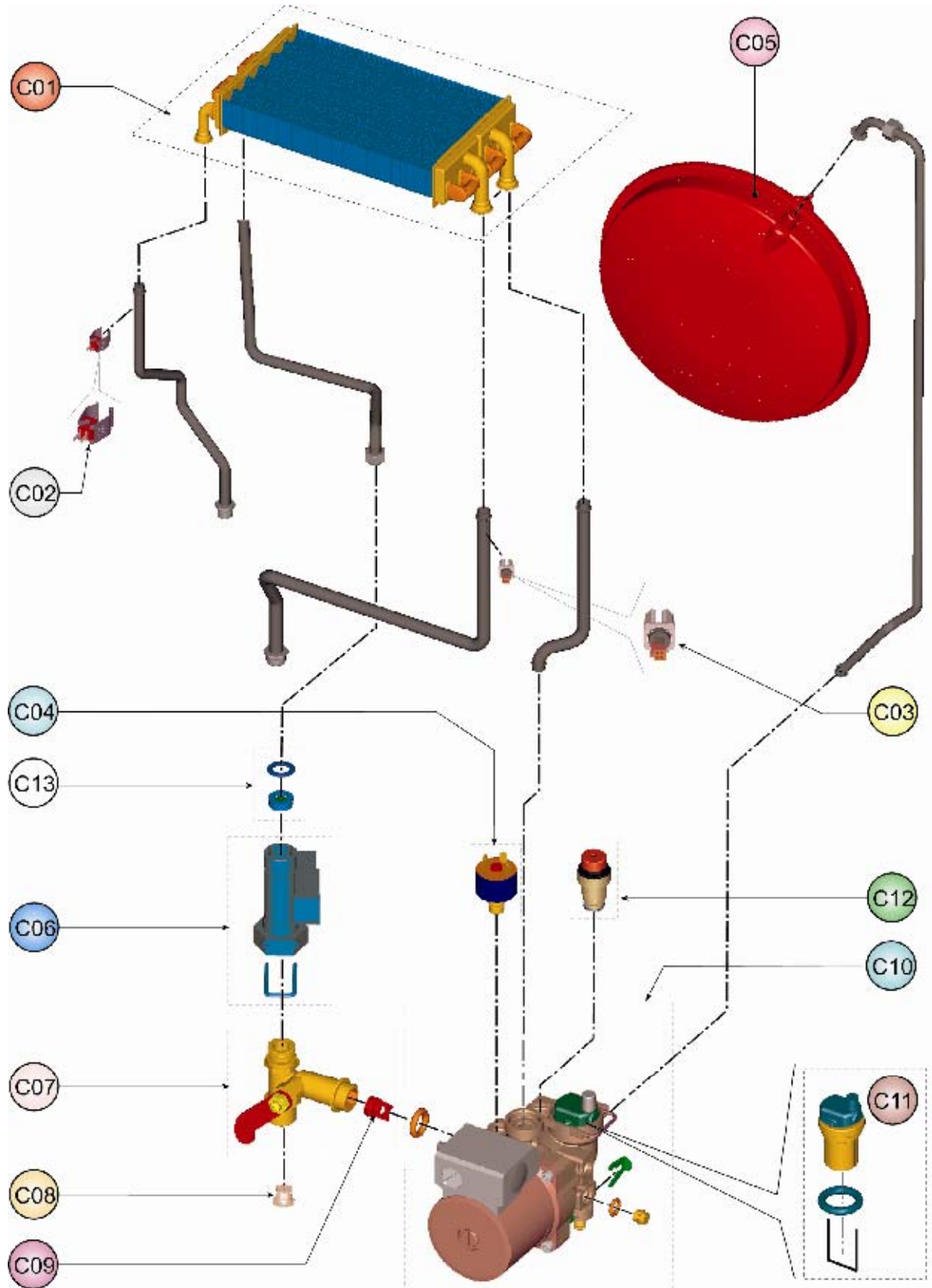
FEReasy F32



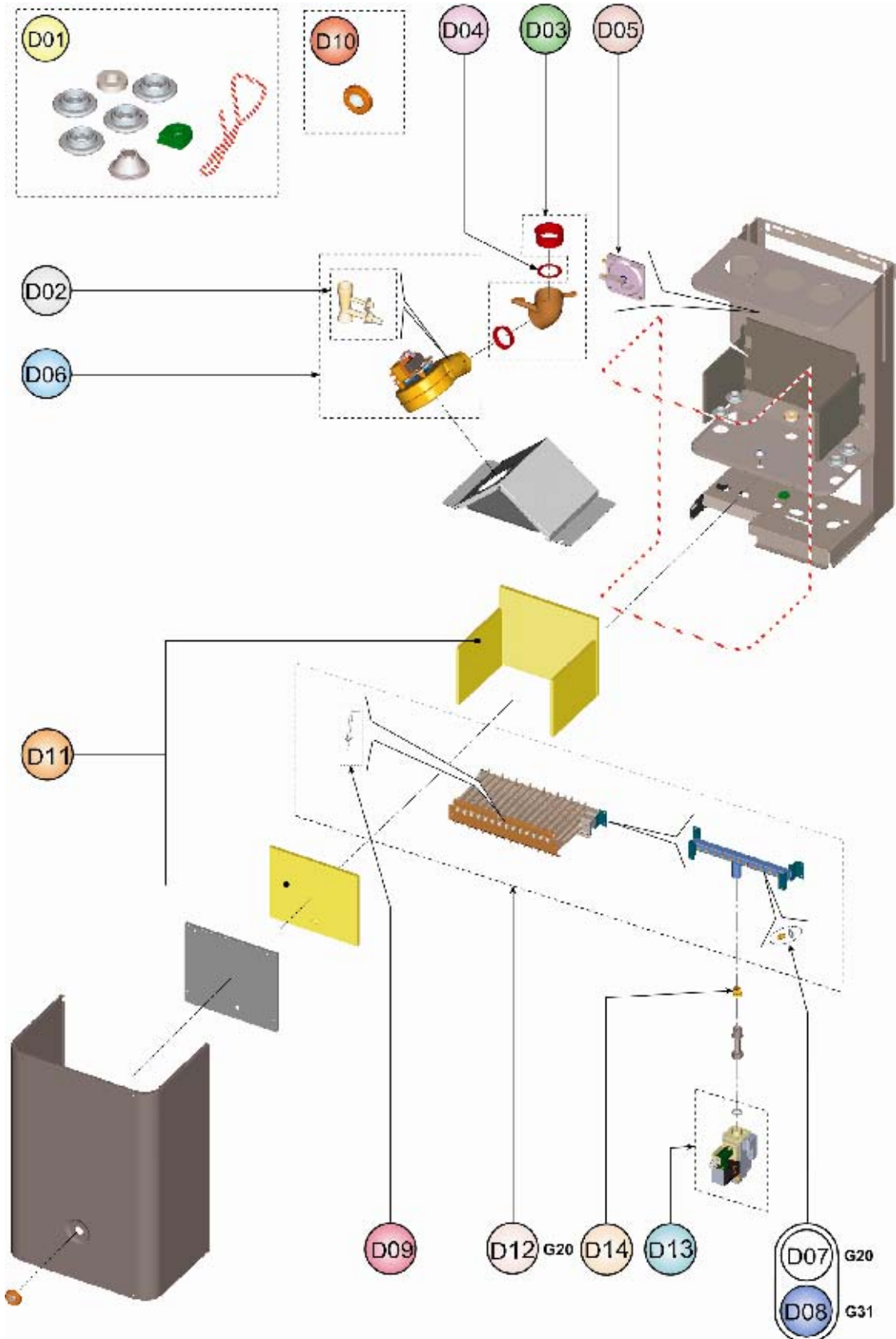
FEReasy F32



FEReasy F32



FEReasy F32





FEReasy F32

LISTA PEZZI

POS.	CODICE	DESC.	QT.
A01	39820730	KIT MANTELLO (31120070)	1.000
B01	39820680	KIT 2 MANOPOLE (35012330)	1.000
B02	39820080	KIT IDROMETRO (36402190)	1.000
B03	39820690	KIT MASCHERINA "FER"(35012320)	1.000
B04	39820700	KIT SCATOLA EL. (35012590)	1.000
B05	39820710	KIT SCHEDE EL. (36508061)	1.000
C01	39819670	KIT SCAMB.BITERM. (37404120)	1.000
C02	39819550	KIT SONDA TEMP. (36200730)	1.000
C03	39810230	KIT SONDA TEMP.SAN. (36200640)	1.000
C04	39818260	KIT PRESSOST.H2O (39404710)	1.000
C05	39809690	KIT VASO ESP.10Lt. (36802740)	1.000
C06	39818550	KIT FLUSSOST.ELTEK (36400710)	1.000
C07	39818280	KIT RUBIN.CARICO (36902150)	1.000
C08	39813230	KIT 5 FILTRI FLUSS. (39402940)	1.000
C09	39818230	KIT 5 VALV.N/R (39404740)	1.000
C10	39820900	KIT POMPA 15-60 FPL (36600150)	1.000
C11	39818220	KIT V.ARIA (39404380-39404730)	1.000
C12	39818270	KIT VALV.SIC. (39404720)	1.000
C13	39813220	KIT 5 REG.PORT.15Lt.(36902100)	1.000
D01	39819680	KIT GUARN.CALD. Sr.ABF7	1.000
D02	39808471	KIT PRESE (35101310-35101323)	1.000
D03	39817990	KIT CURVA USC.FUMI (33301610)	1.000
D04	39819690	KIT DIAFR.FUMI (32700870-890)	1.000
D05	39817510	KIT PRESS.DIFF.ARIA (36402050)	1.000
D06	39818021	KIT VENTIL. (36601872)	1.000
D07	39819700	KIT 15 UG.1,35 m. (34009821)	1.000
D08	39819710	KIT 15 UG.0,79 gpl (34013300)	1.000
D09	39819430	KIT ELETTRODO ACC. (36702890)	1.000
D10	39811330	KIT SPIA SILICONE (35102690)	1.000
D11	39819720	KIT ISOL.CAM.COMB.Sr.ABC7-ABF7	1.000
D12	39819730	KIT BRUC.15R.m. (37608931)	1.000
D13	39819620	KIT VALV.GAS (36800610)	1.000
D14	39835770	KIT 10 DIAFRAM.D.5,6(34015080)	1.000