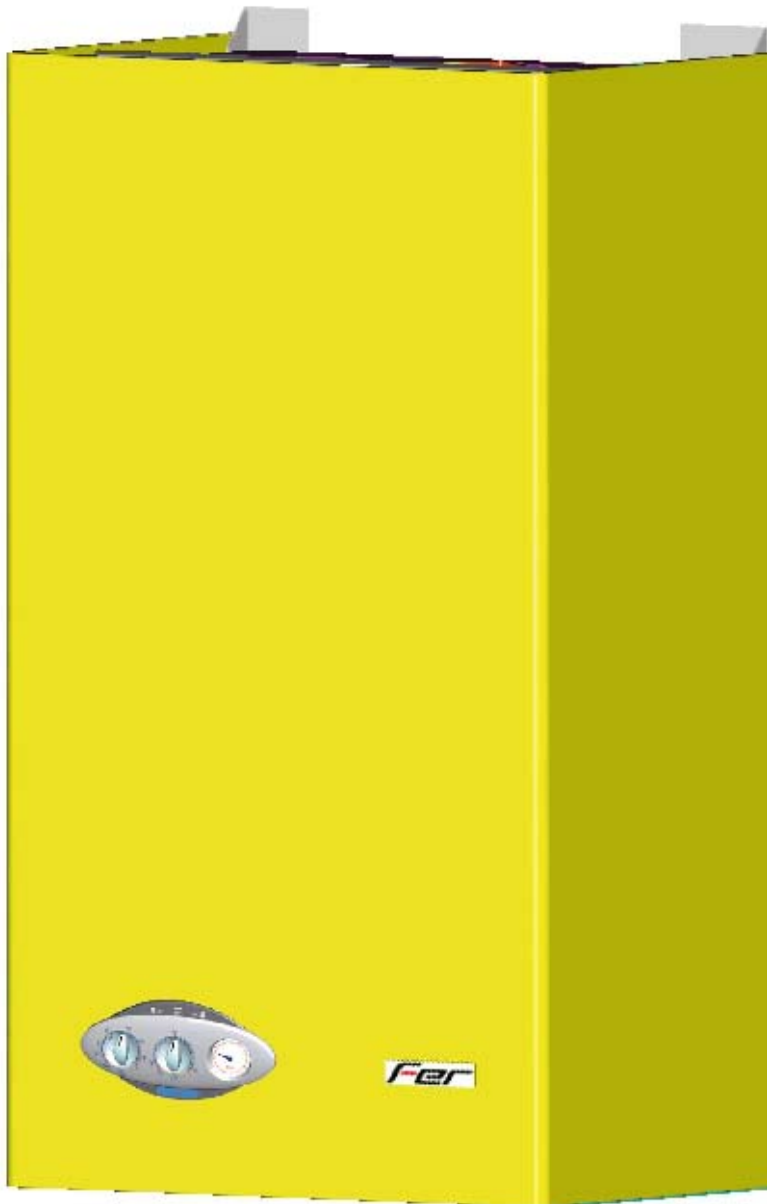


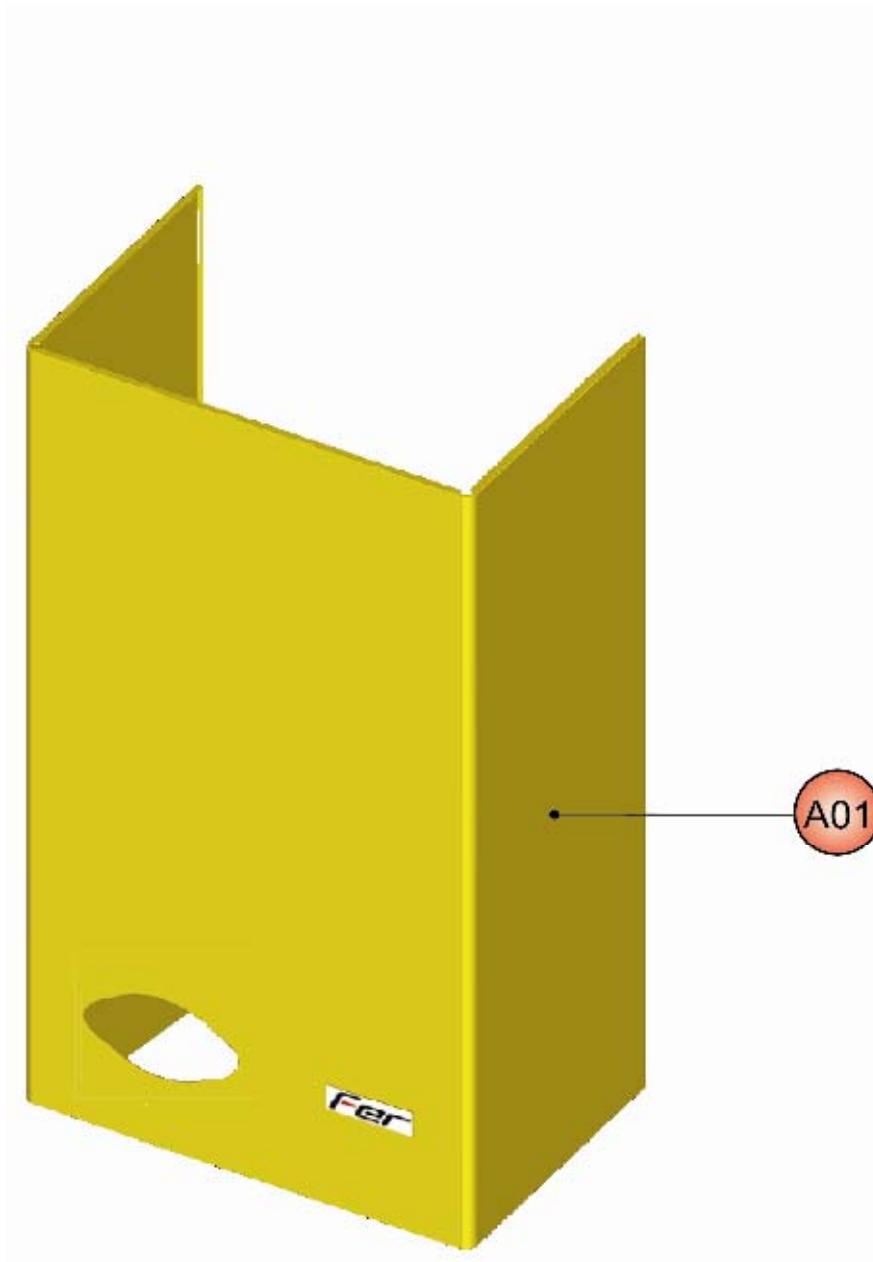


FEReasy F24

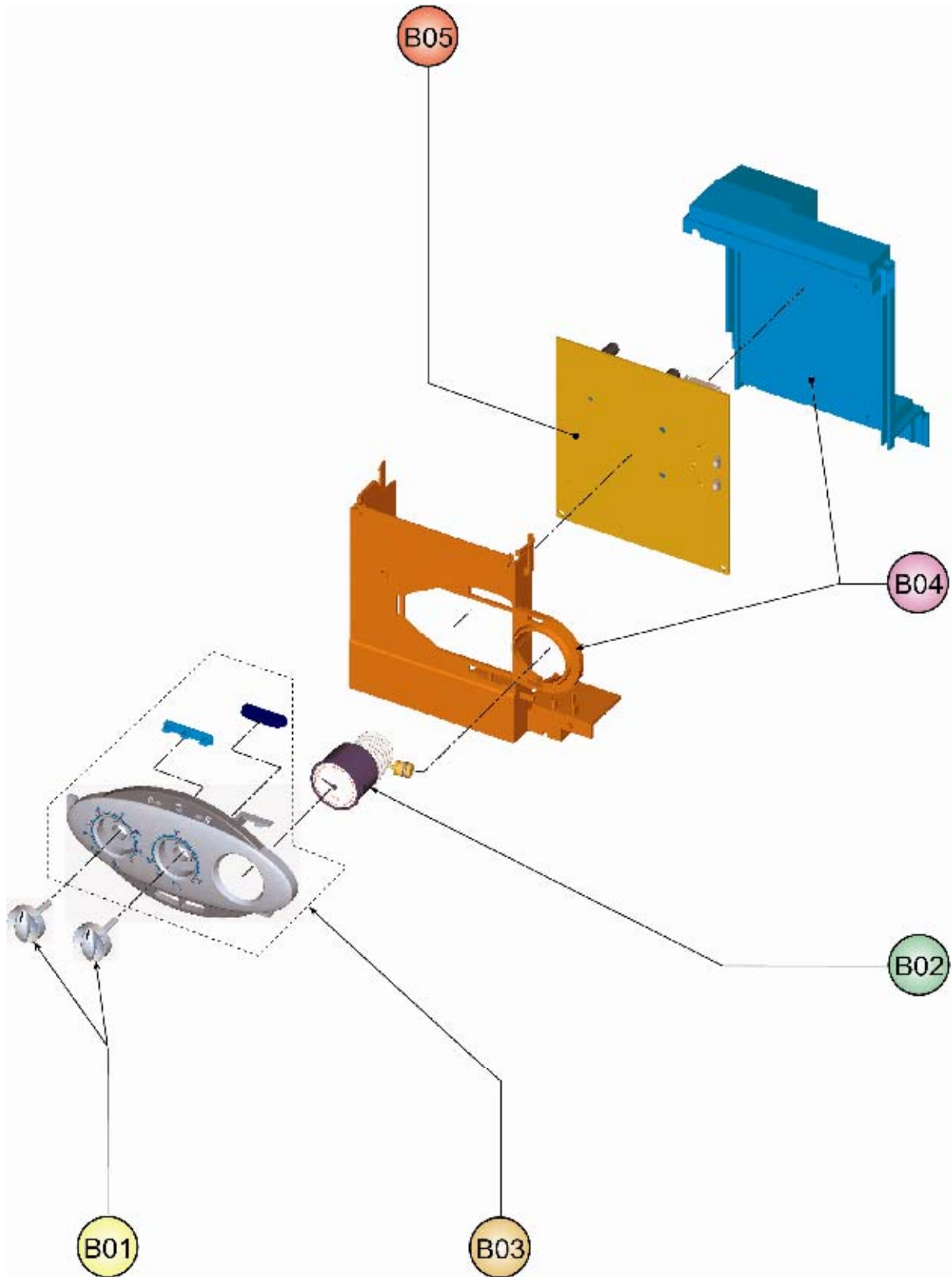


CODICE	EDIZIONE	MERCATO
30K0300001	01/07/2007	A1

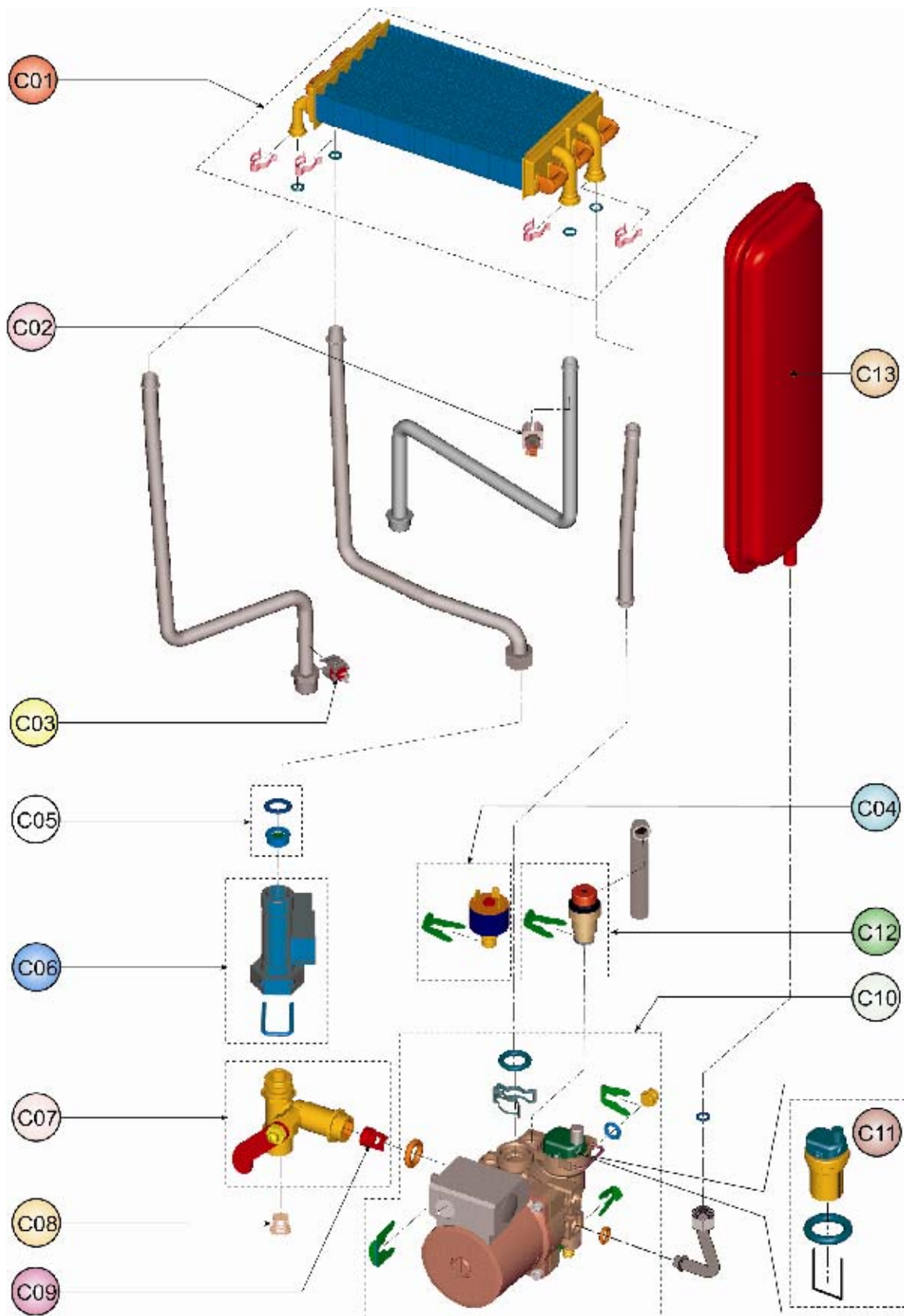
FEReasy F24



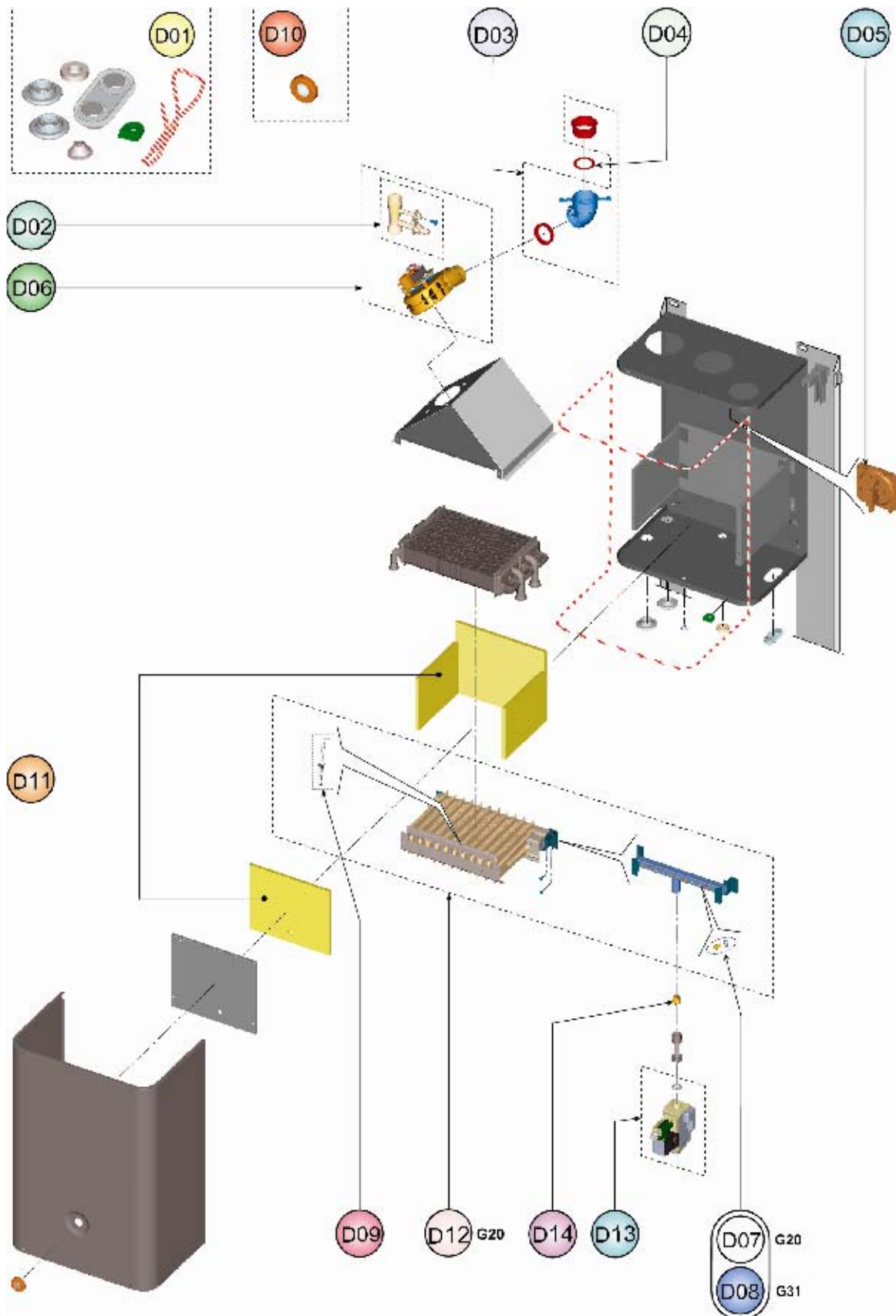
FEReasy F24



FEReasy F24



FEReasy F24





FEReasy F24

LISTA PEZZI

POS.	CODICE	DESC.	QT.
A01	39820670	KIT MANTELLO "FER"(31120130)	1.000
B01	39820680	KIT 2 MANOPOLE (35012330)	1.000
B02	39820080	KIT IDROMETRO (36402190)	1.000
B03	39820690	KIT MASCHERINA "FER"(35012320)	1.000
B04	39820700	KIT SCATOLA EL. (35012590)	1.000
B05	39820710	KIT SCHEDE EL. (36508060)	1.000
C01	39819540	KIT SCAMB.BITERM. (37404110)	1.000
C02	39819550	KIT SONDA TEMP. (36200730)	1.000
C03	39810230	KIT SONDA TEMP.SAN. (36200640)	1.000
C04	39818260	KIT PRESSOST.H2O (39404710)	1.000
C05	39813010	KIT 5 REG.PORT.10Lt.(36902080)	1.000
C06	39818550	KIT FLUSSOST.ELTEK (36400710)	1.000
C07	39819560	KIT RUBIN.CARICO (36902140)	1.000
C08	39813230	KIT 5 FILTRI FLUSS. (39402940)	1.000
C09	39818230	KIT 5 VALV.N/R (39404740)	1.000
C10	39818450	KIT POMPA AO/FX3FPL (36600100)	1.000
C11	39818220	KIT V.ARIA (39404380-39404730)	1.000
C12	39818270	KIT VALV.SIC. (39404720)	1.000
C13	39827800	KIT VASO ESP.7Lt. (36800800)	1.000
D01	39819580	KIT GUARN.CALD. Sr.ABF4	1.000
D02	39808471	KIT PRESE (35101310-35101323)	1.000
D03	39817990	KIT CURVA USC.FUMI (33301610)	1.000
D04	39819460	KIT DIAFR.FUMI Di.43-47	1.000
D05	39817510	KIT PRESS.DIFF.ARIA (36402050)	1.000
D06	39817550	KIT VENTIL. (36601851)	1.000
D07	39819590	KIT 11 UG.1,35 m. (34009821)	1.000
D08	39819600	KIT 11 UG.0,79 gpl (34013300)	1.000
D09	39819430	KIT Elettrodo ACC. (36702890)	1.000
D10	39811330	KIT SPIA SILICONE (35102690)	1.000
D11	39819610	KIT ISOL.CAM.COMB.Sr.ABC4-ABF4	1.000
D12	39819630	KIT BRUC.11R.m. (37608911)	1.000
D13	39819620	KIT VALV.GAS (36800610)	1.000
D14	39809960	KIT 10 DIAFR.5,0X12 (34012790)	1.000